

Annette Haggray
Provost
Alexandria Campus

Mariella Abanto
Executive Assistant

Jay Steere
Dean
Languages, Arts, and Social Sciences

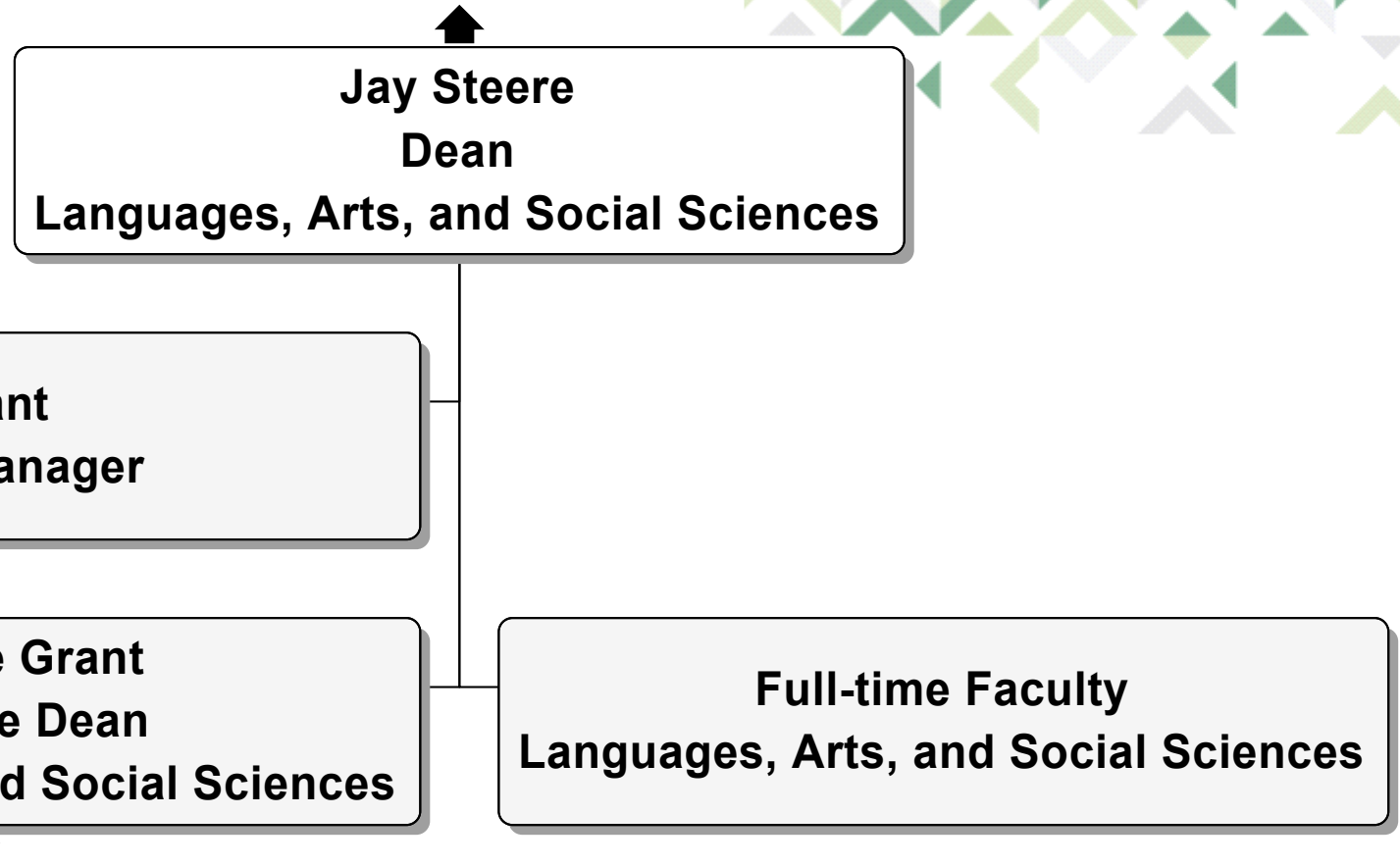
Kathleen Odige
Dean
Student Success

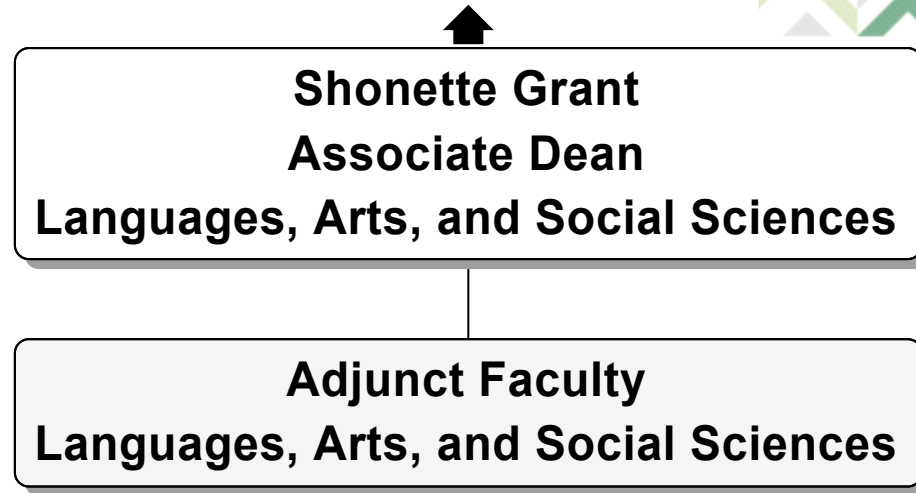
Marcus Henderson
Community Outreach Specialist

Maggie Emblom-Callahan
Dean
Mathematics, Sciences, Technologies, and Business

Anil Manchanda
Director
Campus Operations

Connie Robinson
Coordinator
Enrollment Management and Scheduling





Maggie Emblom-Callahan
Dean
Mathematics, Sciences, Technologies, and Business

Nighat Sabir
Office Manager

Teba Al-Jumaili
Associate Dean
Mathematics, Sciences, Technologies, and Business

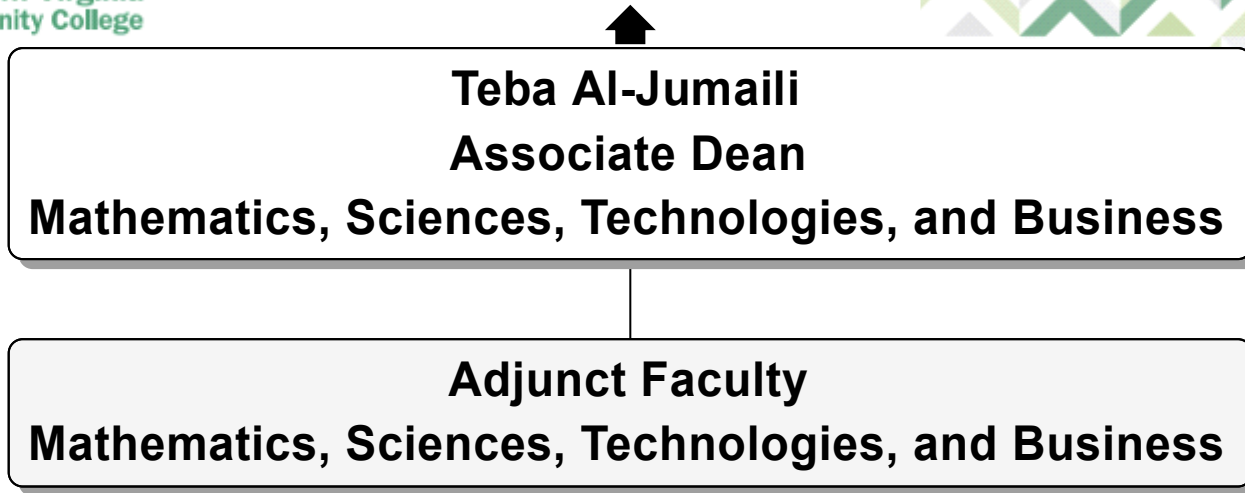
Full-time Faculty
Mathematics, Sciences, Technologies, and Business

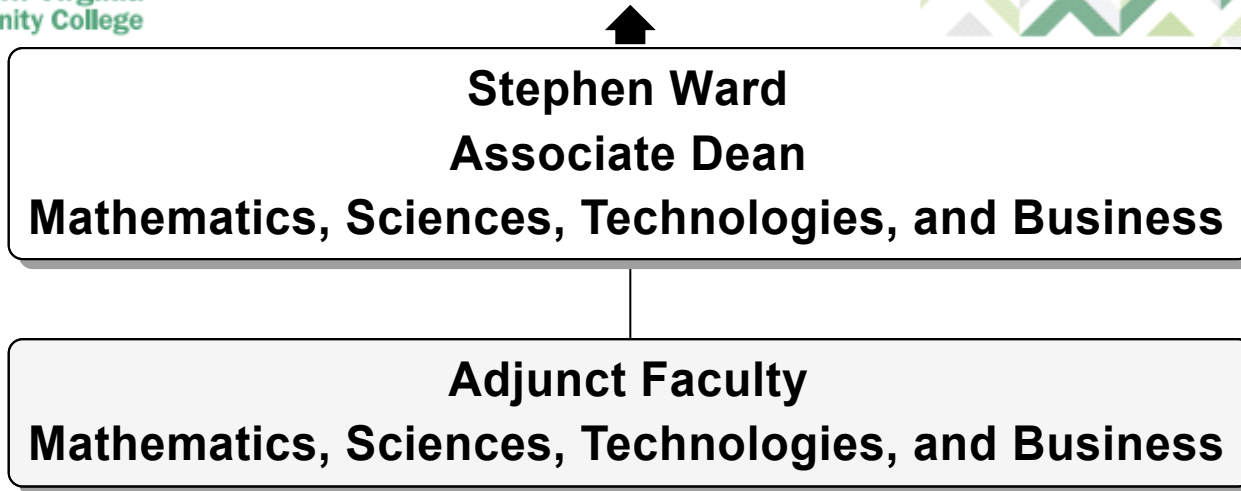
James Lloyd
Instructional Assistant

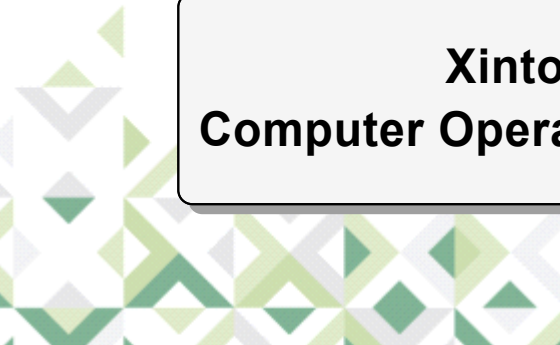
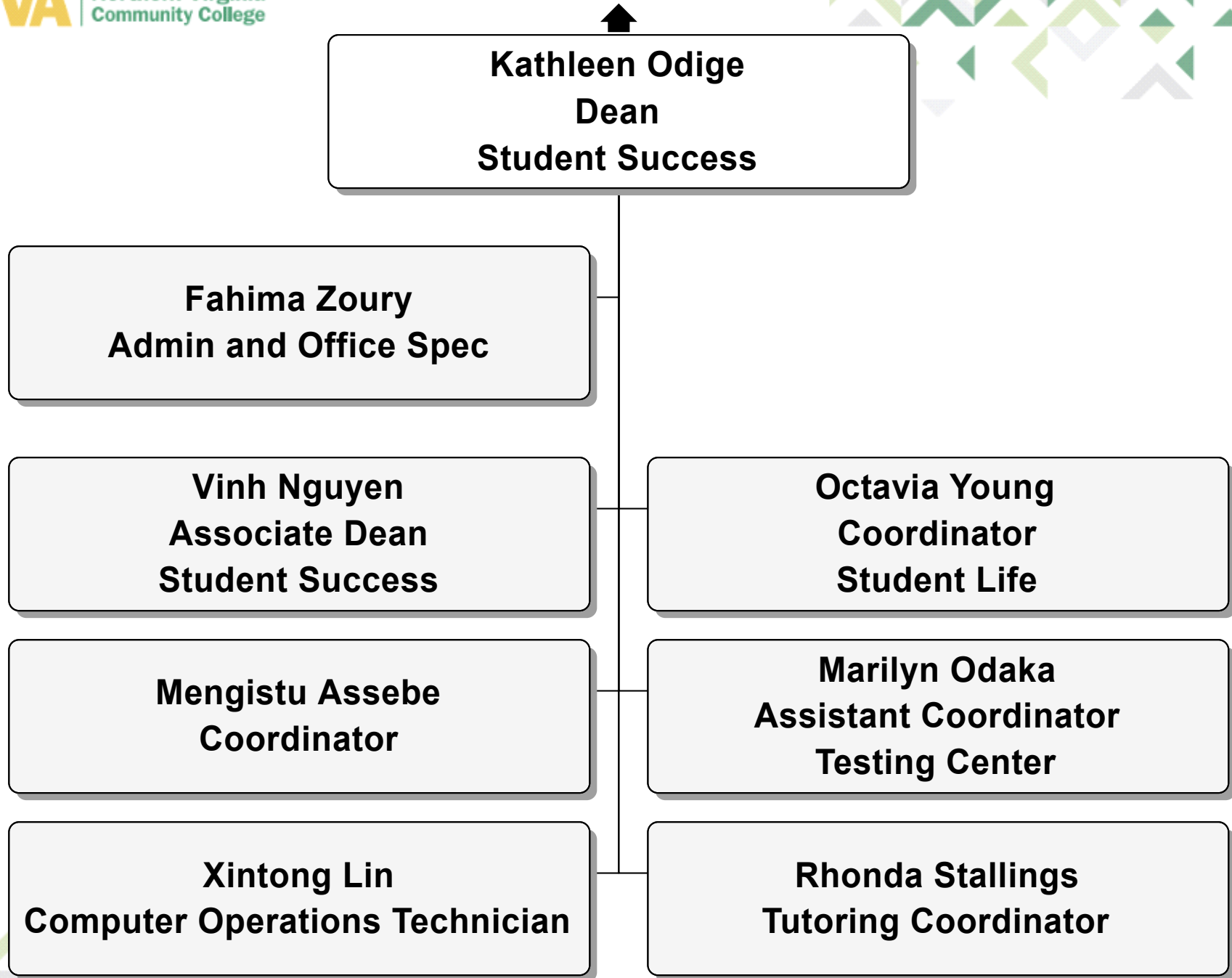
Stephen Ward
Associate Dean
Mathematics, Sciences, Technologies, and Business

Elise Phan
Science Lab Technician

Susan Williams
Instructional Assistant









Diane Mucci
Provost
Annandale Campus

Sharon Tindall
Executive Assistant

Barbara Fuentes
Administrative Assistant

Hemchand Gossai
Dean
Languages, Arts, and Social Sciences

Ellen Fancher-Ruiz
Dean
Student Success

Andrew Goldstein
Evening Administrator

Matthew McCarl
Campus and Community Outreach Specialist

Abbas Eftekhari
Dean
Mathematics, Sciences, Technologies, and Business

Rizwan Rahman
Director
Campus Operations

Joann Credle
Coordinator
Special Programs

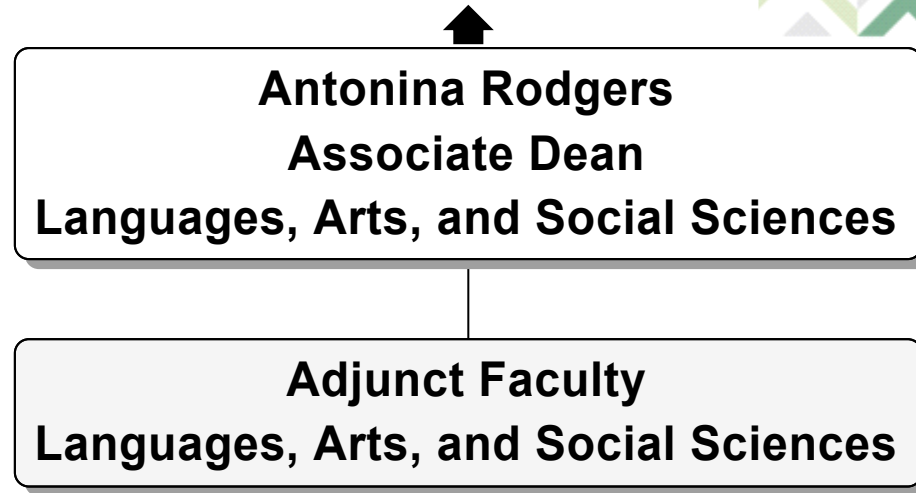
Hemchand Gossai
Dean
Languages, Arts, and Social Sciences

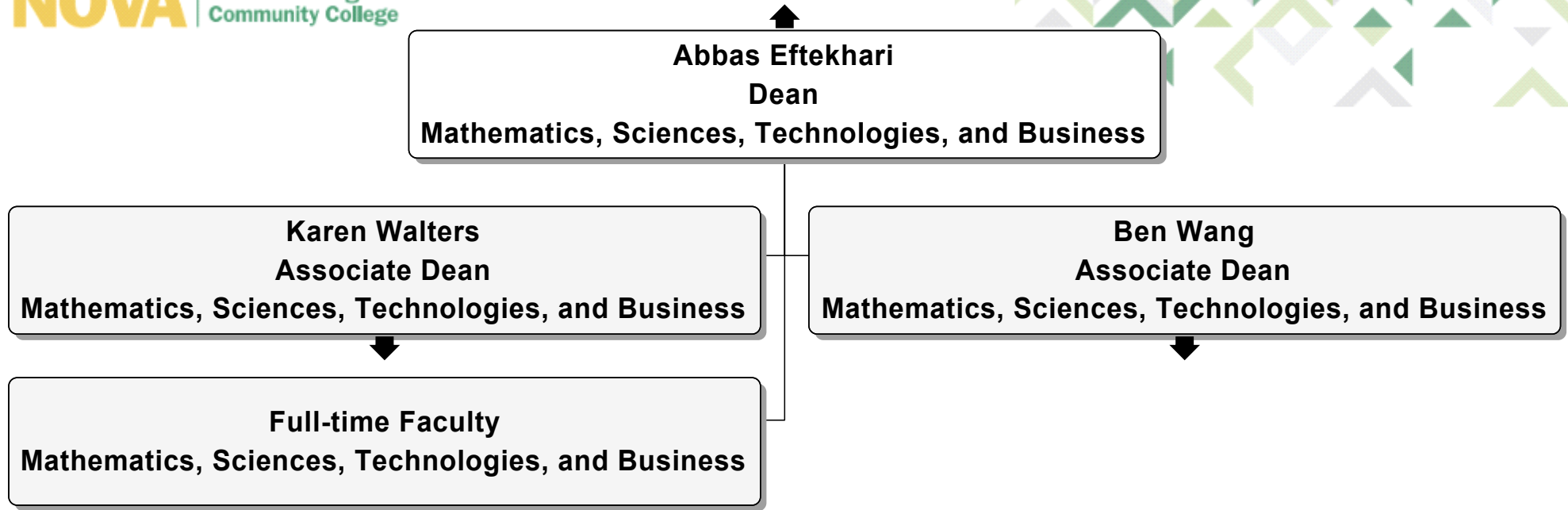
Susan McGinnis
Administrative Assistant

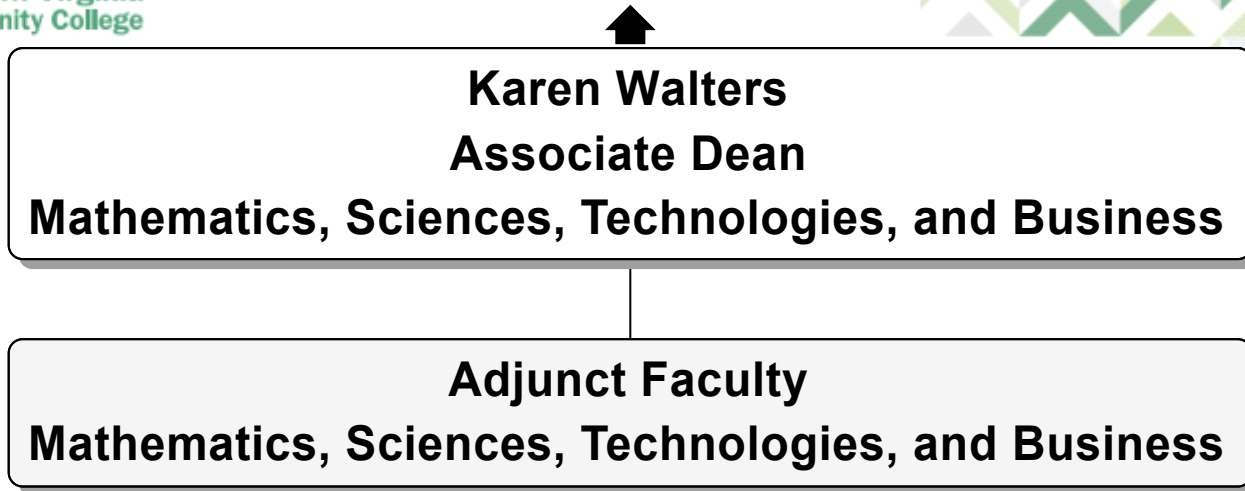
Antonina Rodgers
Associate Dean
Languages, Arts, and Social Sciences

Judith Gomez
Administrative Coordinator

Full-time Faculty
Languages, Arts, and Social Sciences





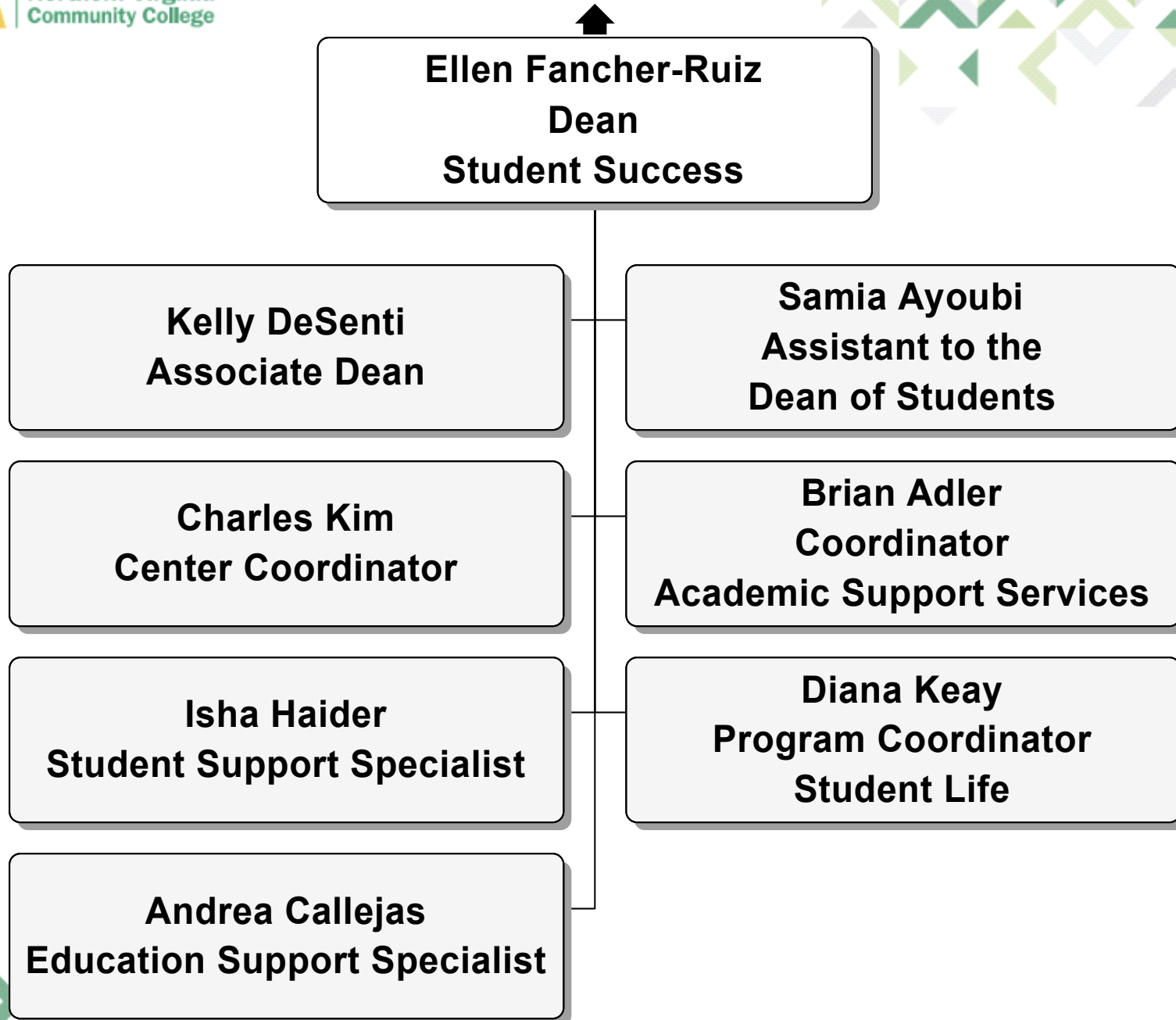


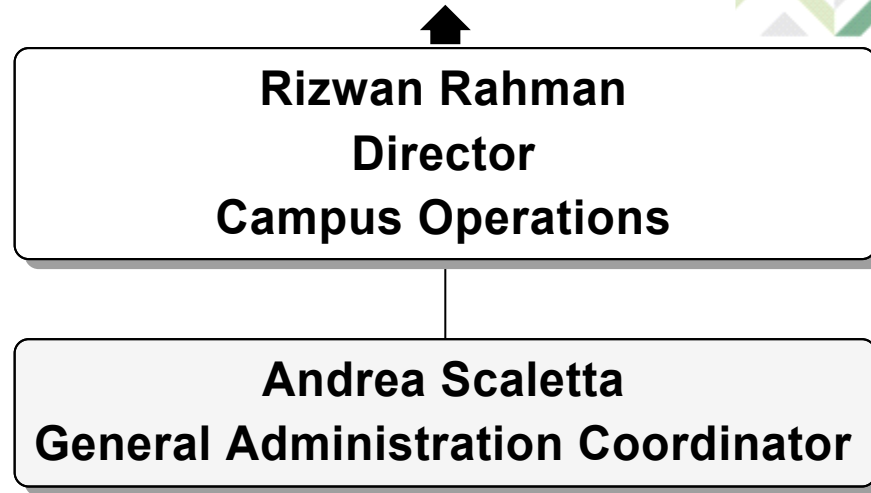
```
graph TD; A["Ben Wang  
Associate Dean  
Mathematics, Sciences, Technologies, and Business"] --- B["Rachada Weiland  
Administrative Assistant"]; A --- C["Adjunct Faculty  
Mathematics, Sciences, Technologies, and Business"]
```

Ben Wang
Associate Dean
Mathematics, Sciences, Technologies, and Business

Rachada Weiland
Administrative Assistant

Adjunct Faculty
Mathematics, Sciences, Technologies, and Business





Julie Leidig
Provost
Loudoun Campus

Faith Lankford
Executive Assistant

Jennifer Rainey
Dean
Languages, Arts, and Social Sciences

Randolph Fournier
Dean
Student Success

Sheila Yusufi
Campus and Community Outreach Specialist

Michael Davis
Dean
Mathematics, Sciences, Technologies, and Business

Alison Malloy
Director
Campus Operations

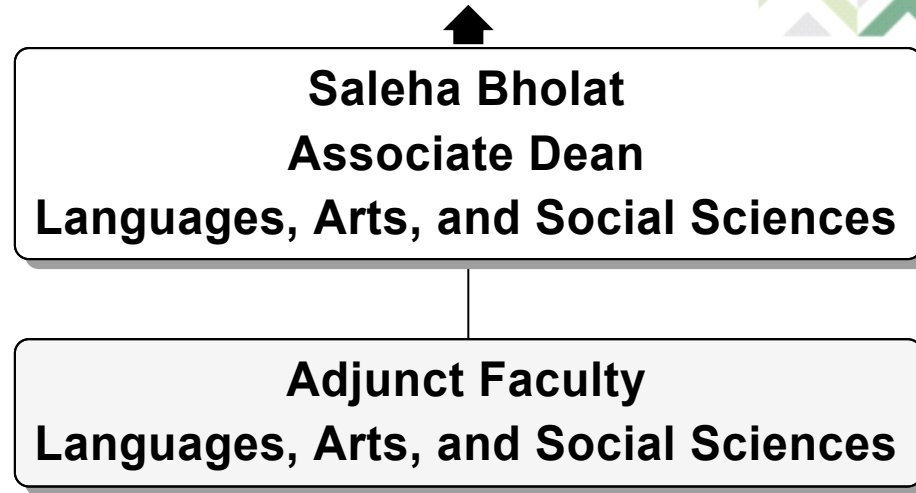
Jennifer Rainey
Dean
Languages, Arts, and Social Sciences

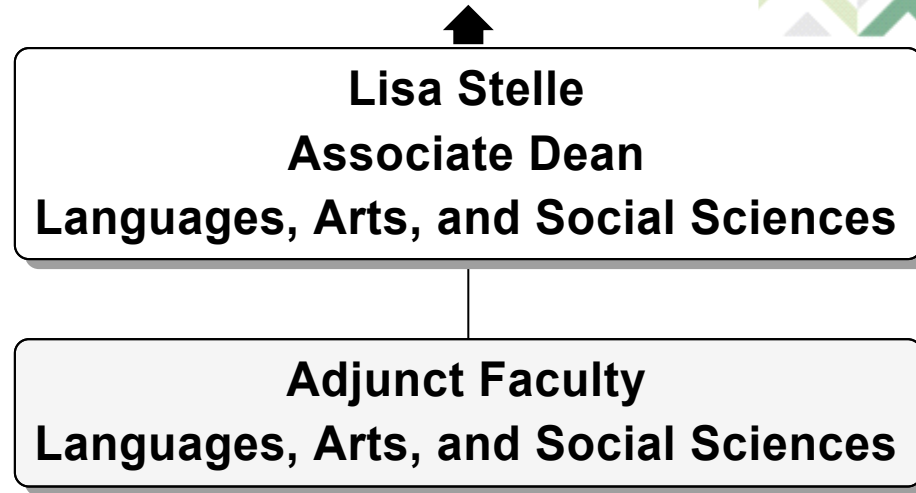
Kellie Marshall
Office Manager

Saleha Bholat
Associate Dean
Languages, Arts, and Social Sciences

Full-time Faculty
Languages, Arts, and Social Sciences

Lisa Stelle
Associate Dean
Languages, Arts, and Social Sciences





Michael Davis
Dean
Mathematics, Sciences, Technologies, and Business

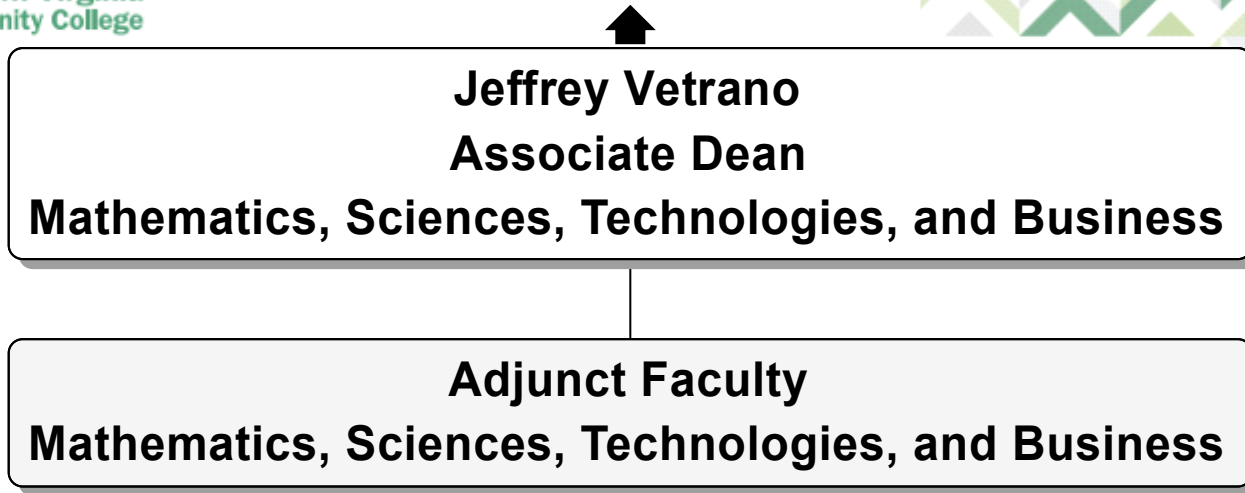
Agatha Riccio
Office Manager

Jeffrey Vetrano
Associate Dean
Mathematics, Sciences, Technologies, and Business

Elizabeth Carr
Lab Manager

Full-time Faculty
Mathematics, Sciences, Technologies, and Business

Maryann Williamson
Laboratory Specialist





Randolph Fournier
Dean
Student Success

Karen Ngo
Administrative and Office Support

Carlita McCombs
Associate Dean
Student Success

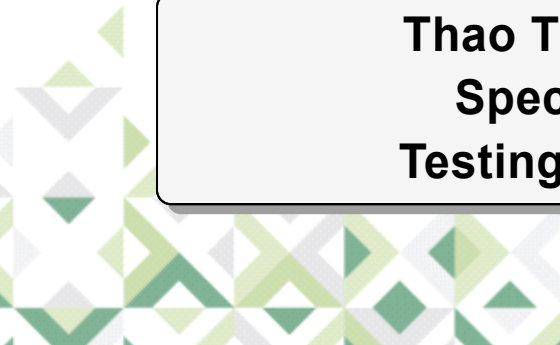
Ly Nguyen
Coordinator
General Administration

Thao Thai Pan
Specialist
Testing Center

Martha Janowski
Program Coordinator
Student Life

Jeremy Ruane
Coordinator
Testing Center

Laurie Mergler
Computer Lab Technician



Molly Lynch
Provost
Manassas Campus

ThuyTien Ngo-Nguyen
Executive Assistant

James Gillispie
Dean
Languages, Arts, and Social Sciences

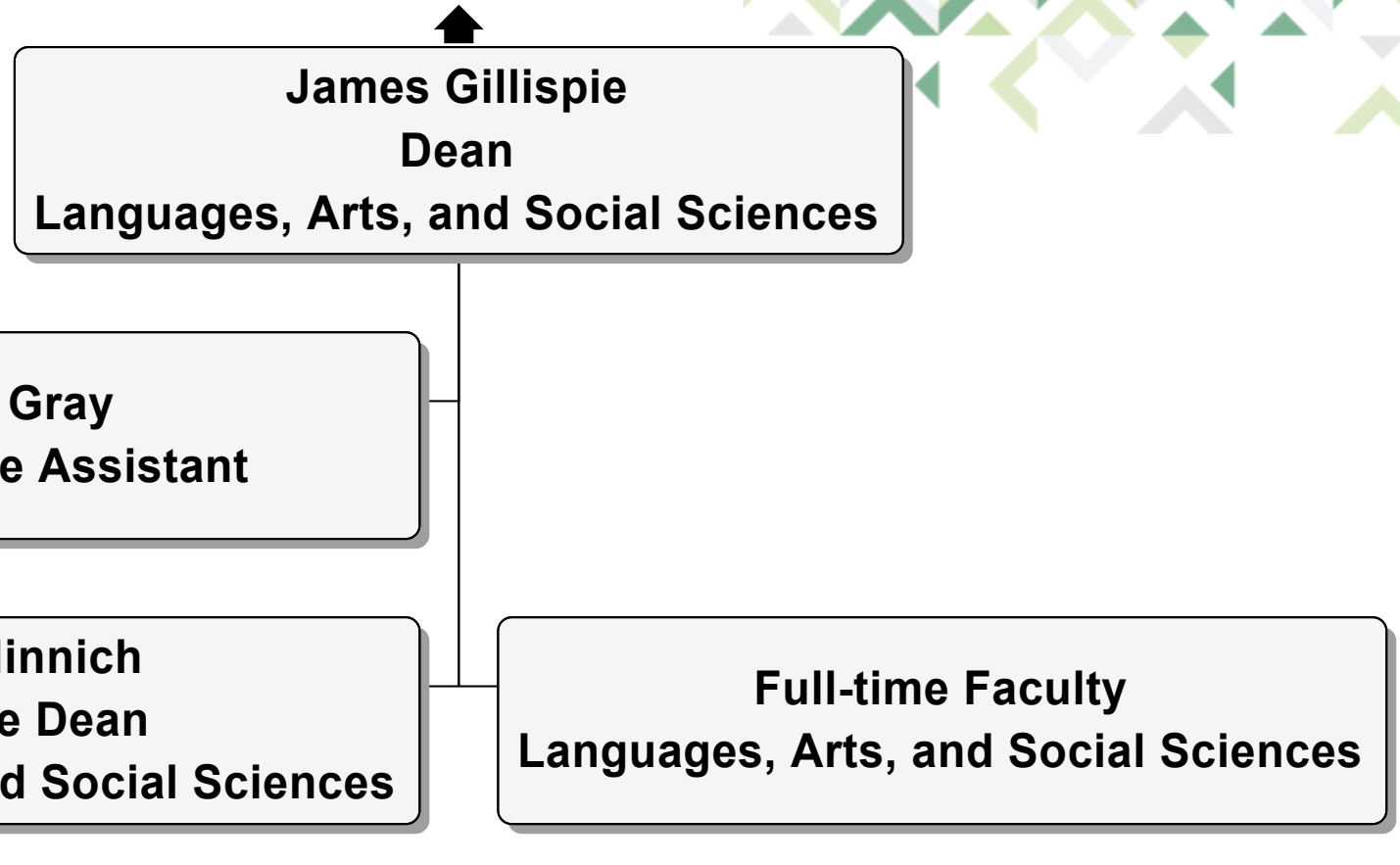
Tamaica Martin
Dean
Student Success

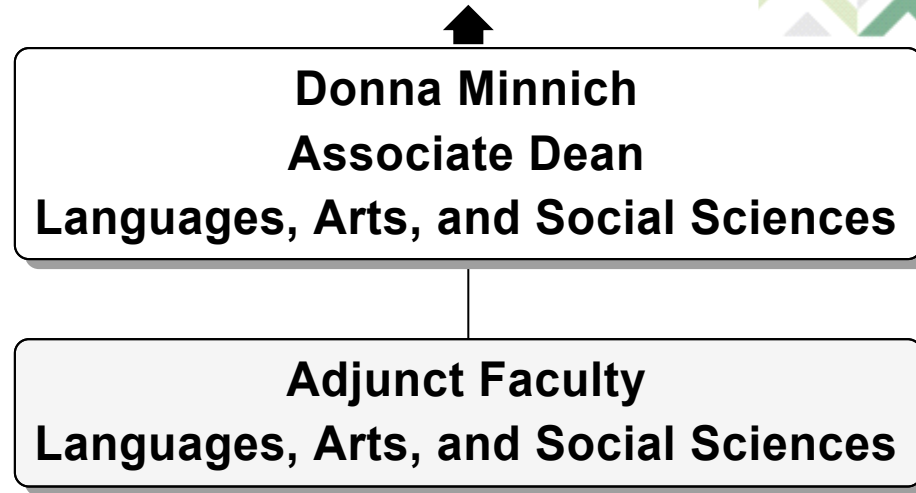
Rania Hammad
Coordinator
Enrollment and Scheduling

Raymond Burton
Dean
Mathematics, Sciences, Technologies, and Business

Danielle Nickas
Director
Campus Operations

Karen Todd
Coordinator
Campus and Community Relations







Raymond Burton
Dean
Mathematics, Sciences, Technologies, and Business



Rafael Soriano
Administrative Assistant

Sherice Paige
Administrative Assistant

Cathleen Cogdill
Associate Dean
Mathematics, Sciences, Technologies, and Business



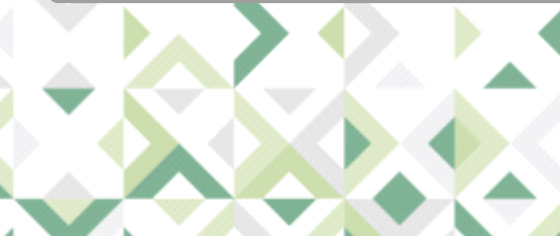
Dana Greenstreet
Automotive Program Assistant

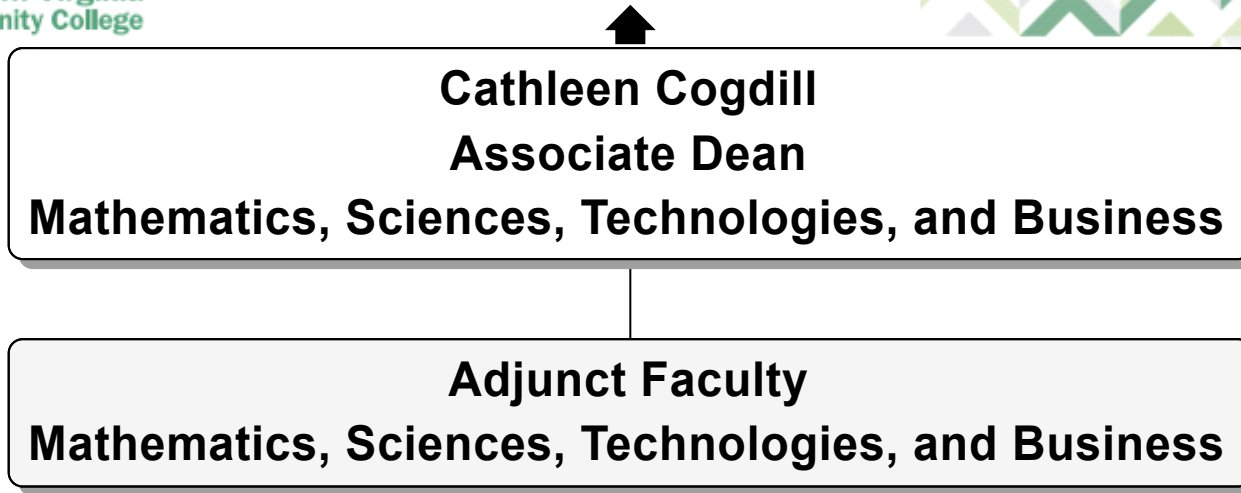
Paphapit Rubis
Lab Assistant/Coordinator

Full-time Faculty
Mathematics, Sciences, Technologies, and Business

Micah Poole
Lead
Math Support Specialist

Nasser Babakhani
Instructional Assistant





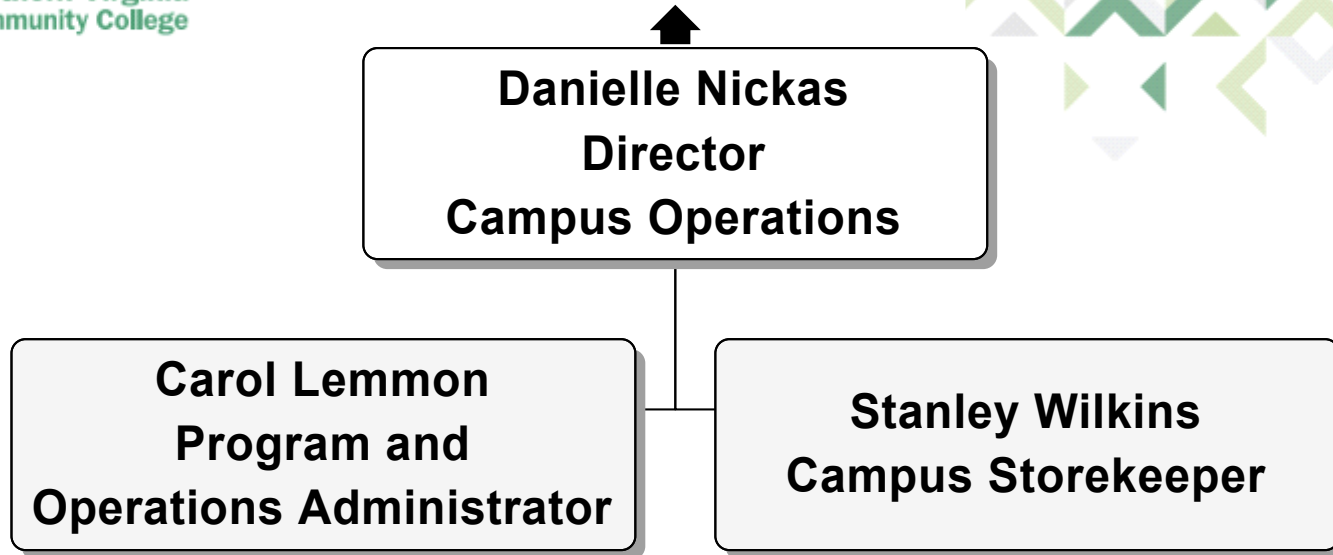
```
graph BT; TMT["Tamaica Martin  
Dean  
Student Success"]; SR["Steven Rakoff  
Associate Dean  
Student Success"]; DC["Daphne Carter-McCants  
Coordinator  
Student Life"]; V["Vacant  
Coordinator  
Learning and Technology Resources"]; SR --- TMT; DC --- TMT; V --- TMT;
```

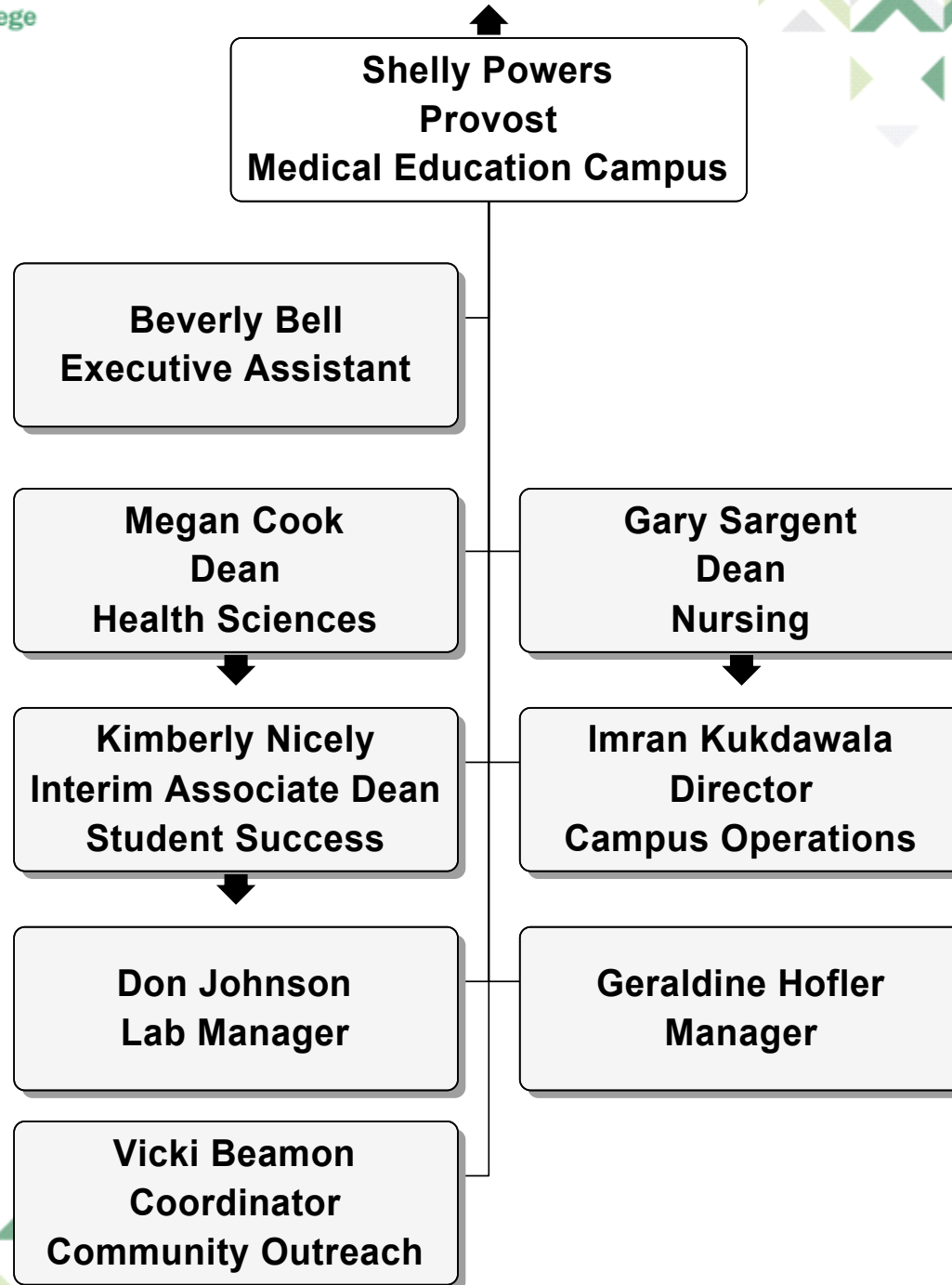
Tamaica Martin
Dean
Student Success

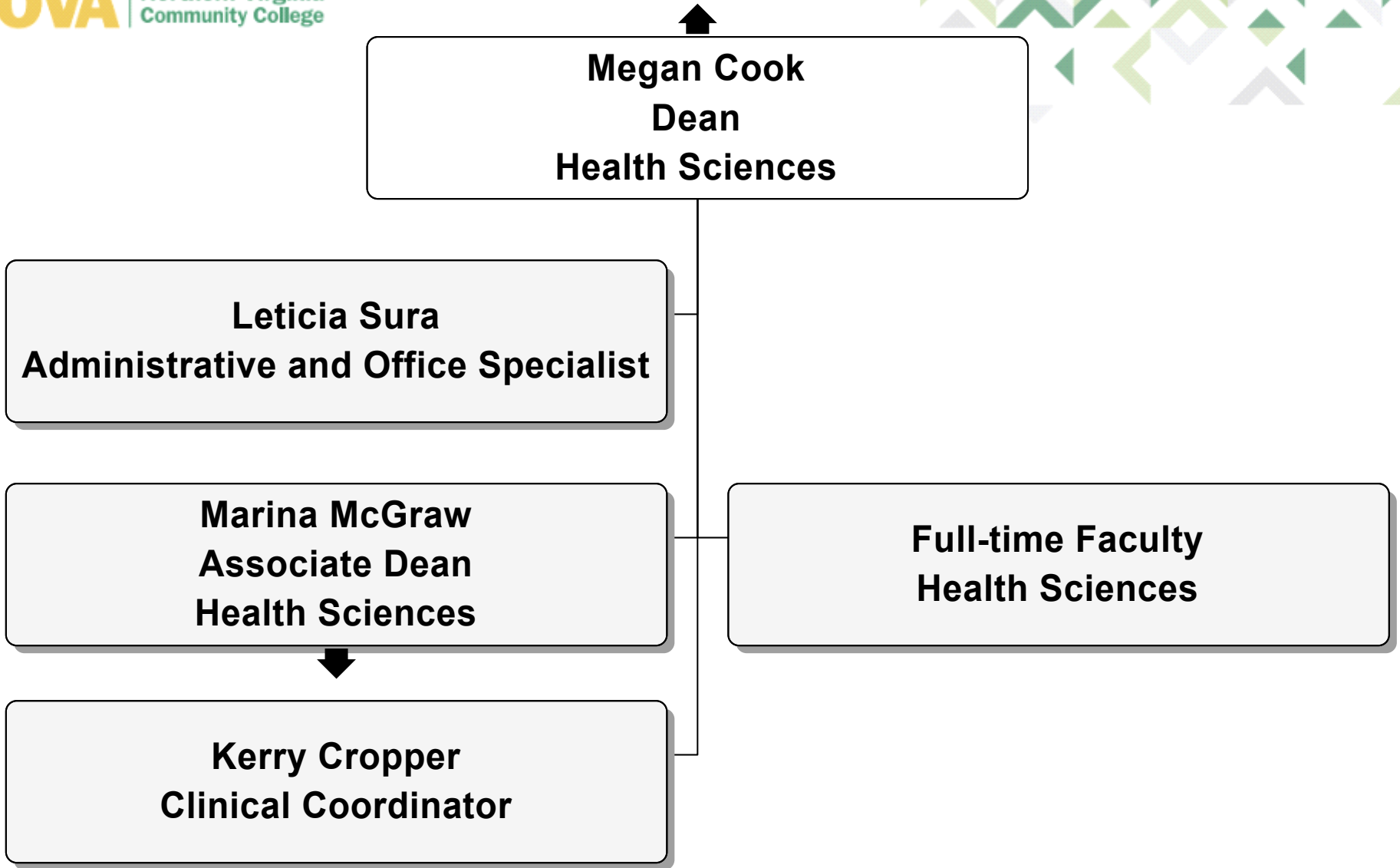
Steven Rakoff
Associate Dean
Student Success

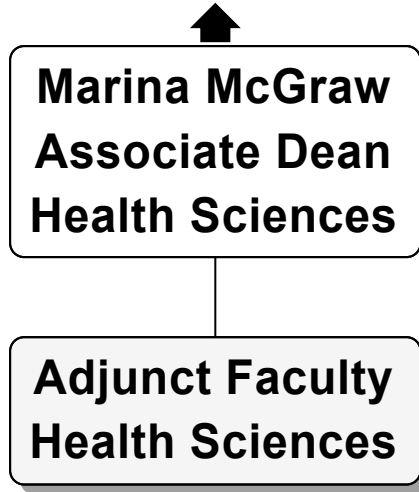
Daphne Carter-McCants
Coordinator
Student Life

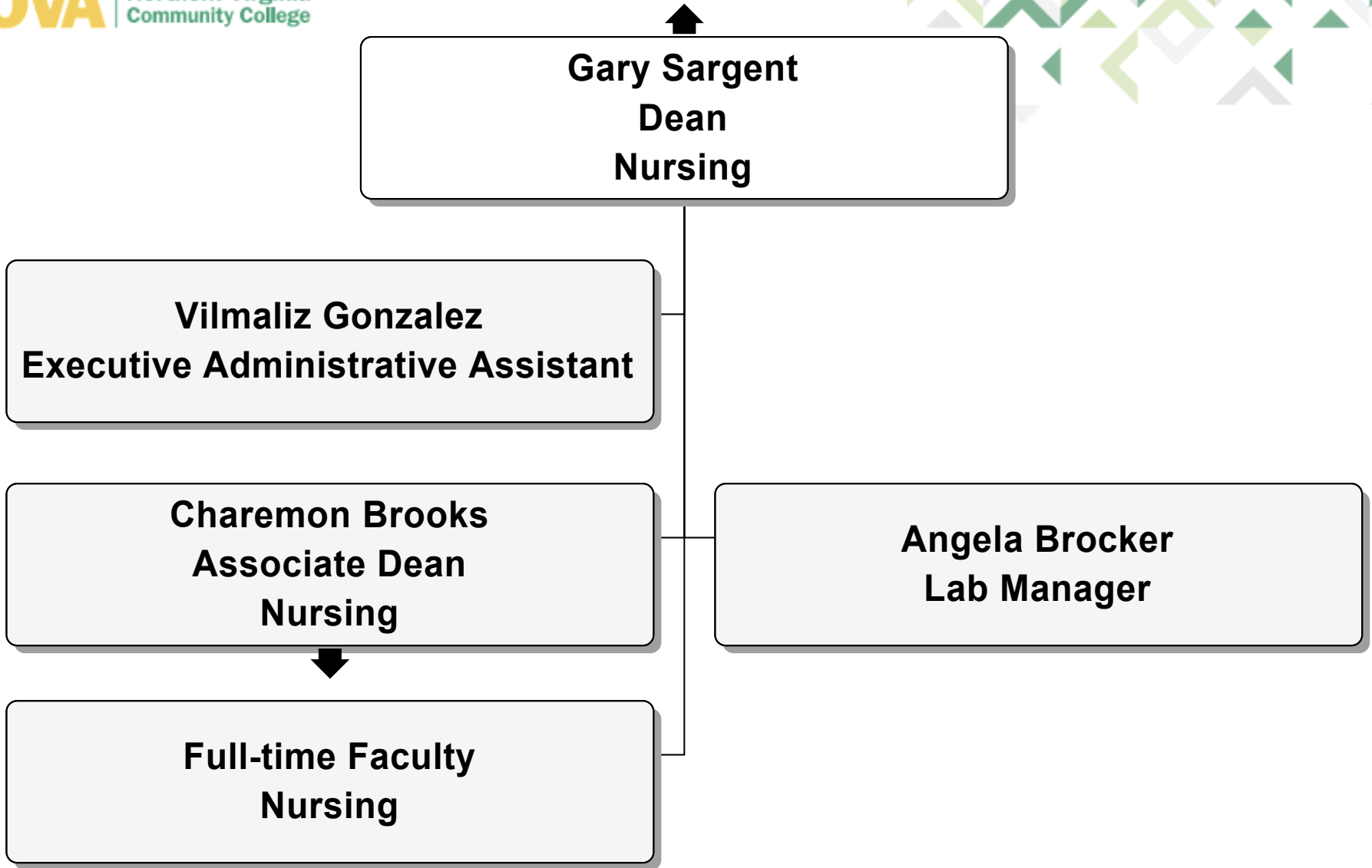
Vacant
Coordinator
Learning and Technology Resources

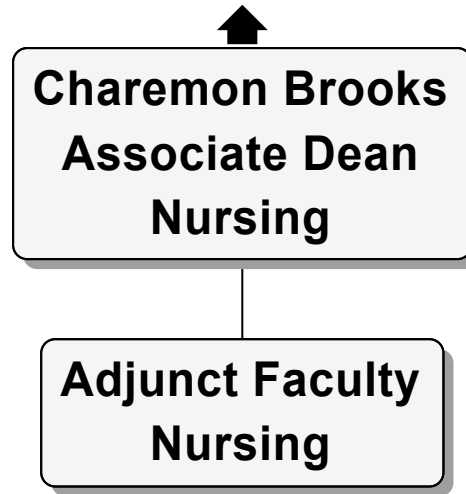


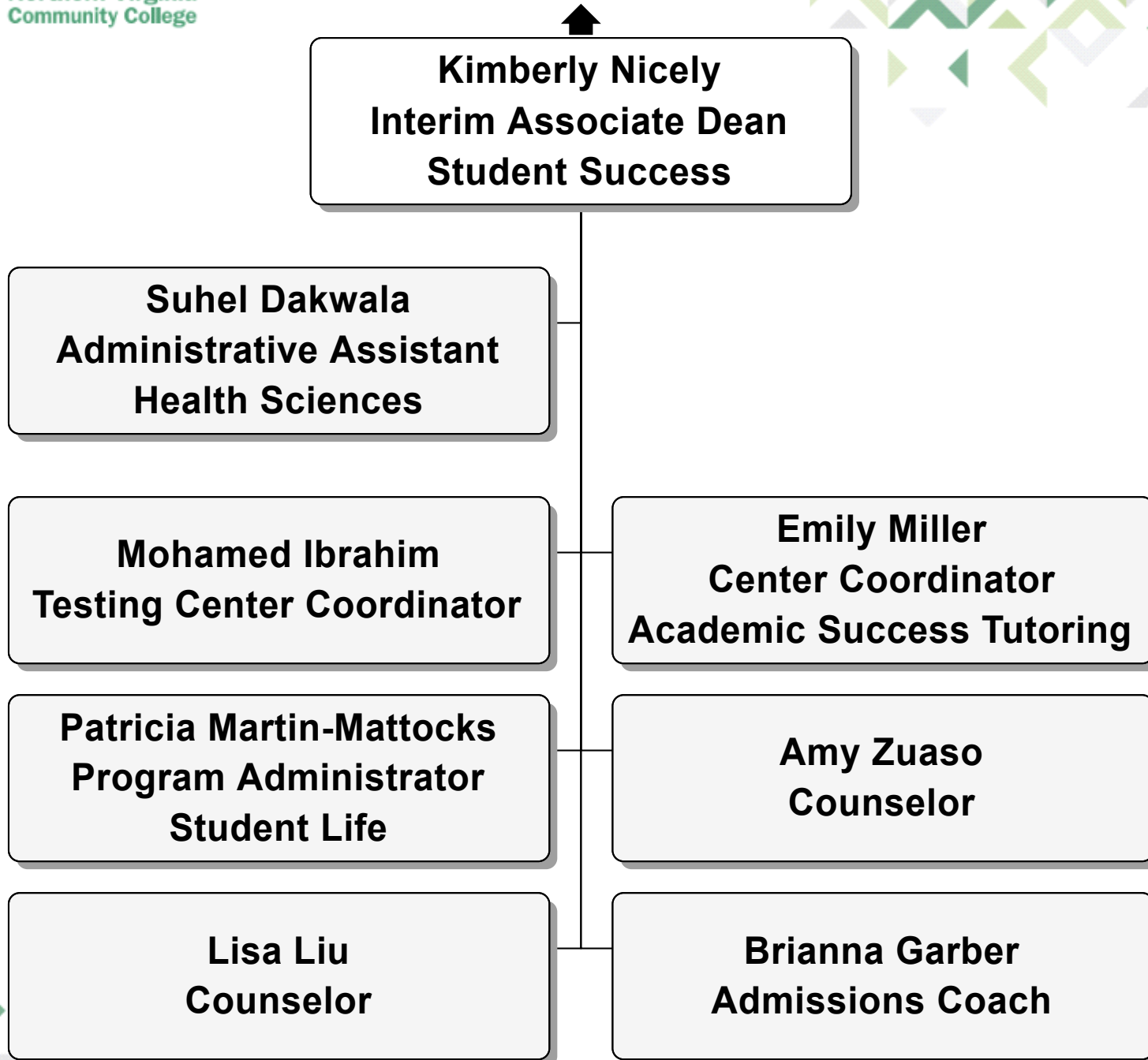












**Richmond Hill
Provost
Woodbridge Campus**

**StacyLynn Shaver
Executive Assistant**

**David Epstein
Dean
Languages, Arts, and Social Sciences**

**Kathy Bohnstedt
Dean
Student Success**

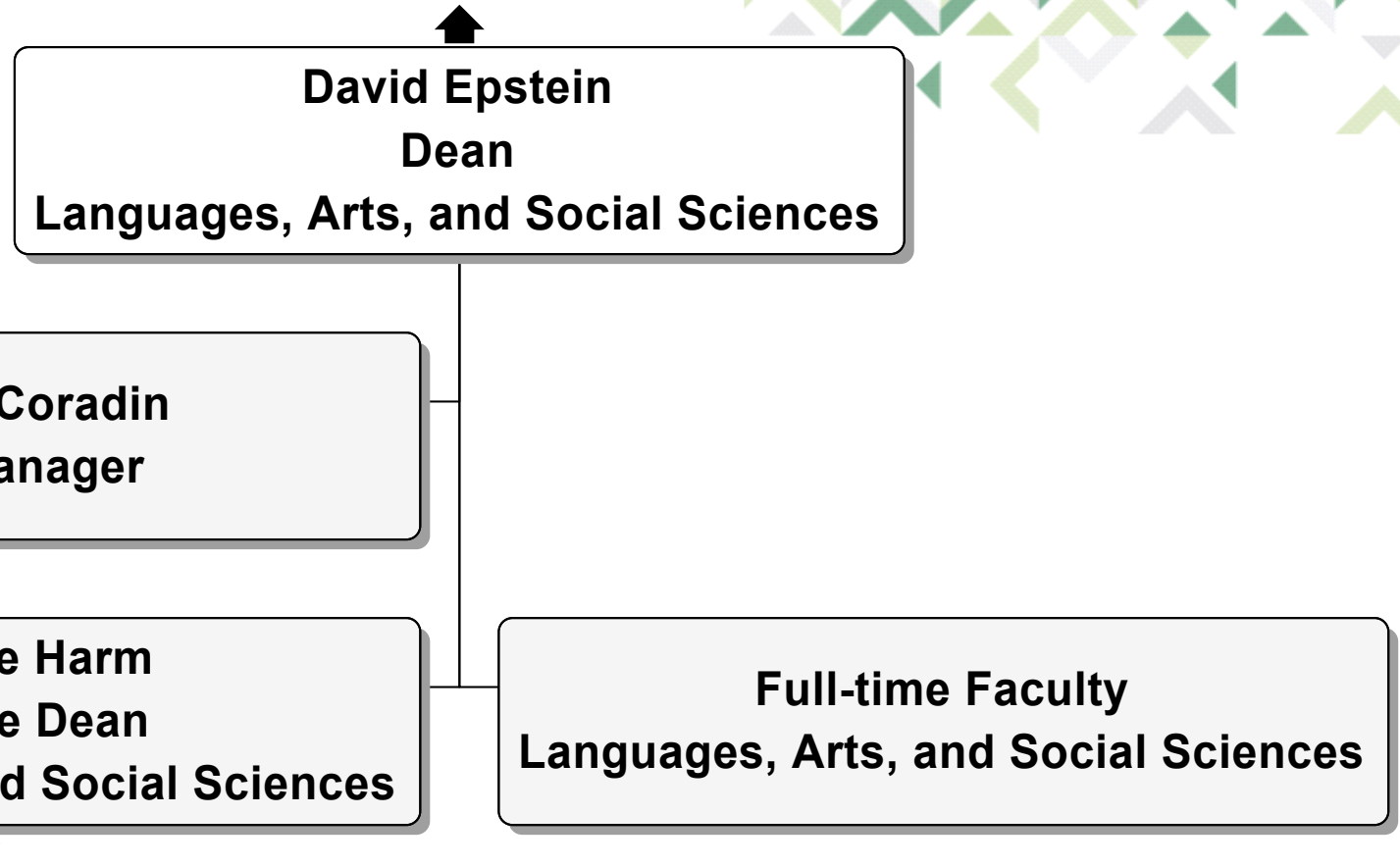
**Charlene Wilkins
Community Outreach Specialist**

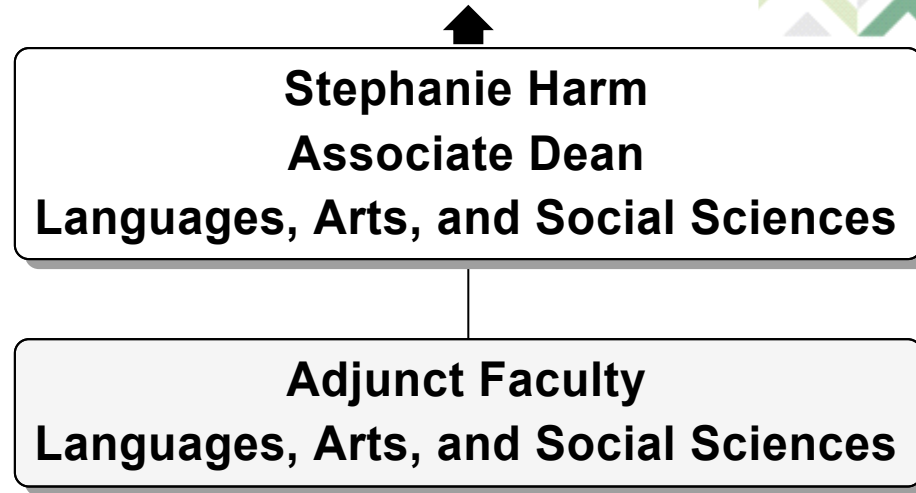
**Carol Baetz
Coordinator
Enrollment Management and Scheduling**

**Alison Thimblin
Dean
Mathematics, Sciences, Technologies, and Business**

**Maxine Toliver
Director
Campus Operations**

**Lawrence Nightingale
Evening and Weekend Administrator**



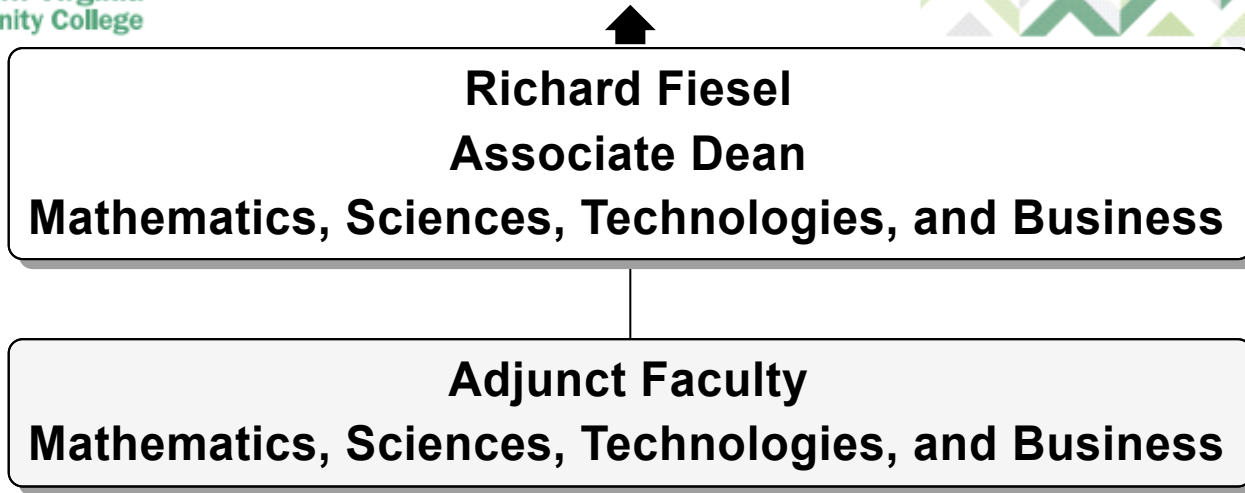


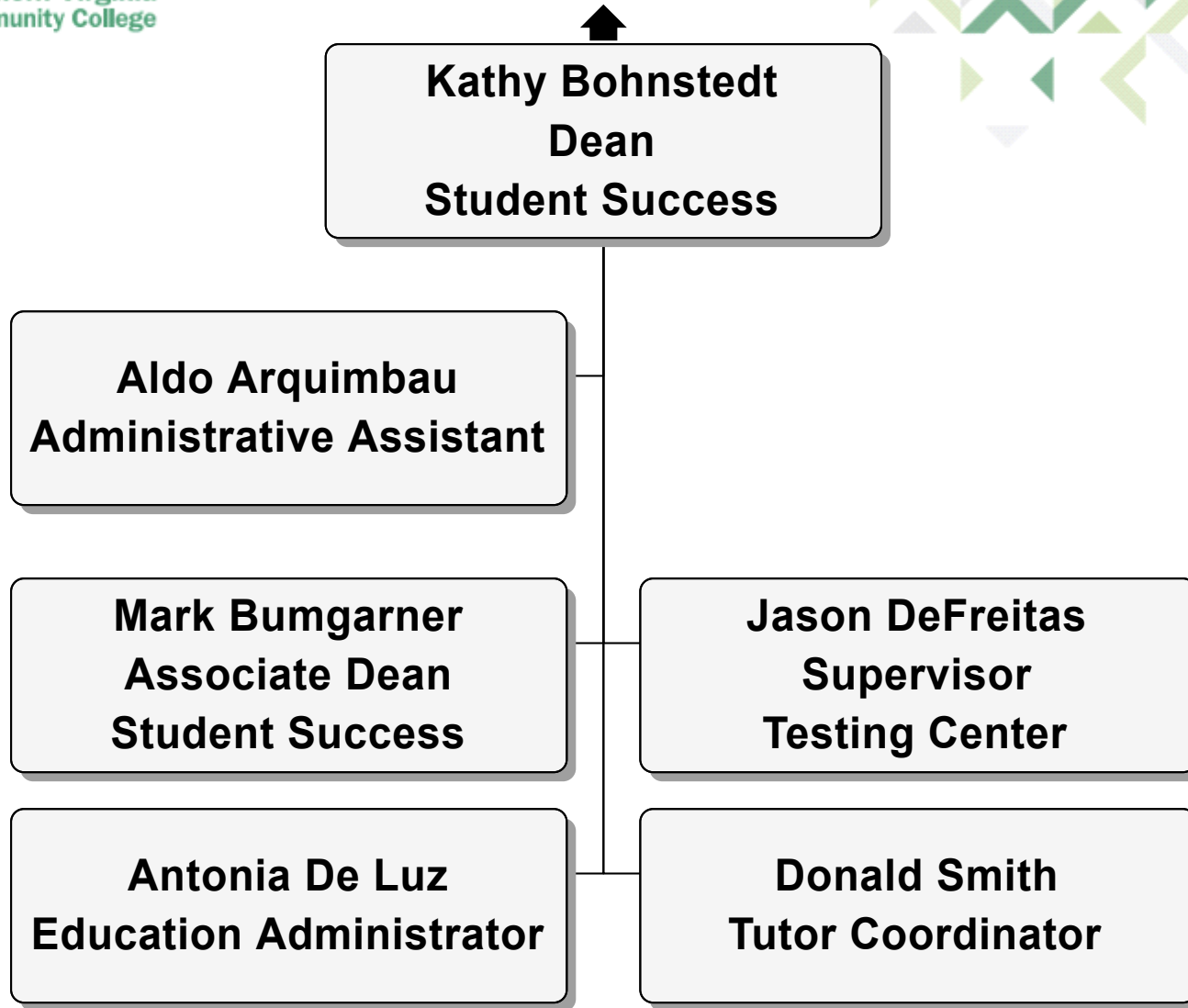
Alison Thimblin
Dean
Mathematics, Sciences, Technologies, and Business

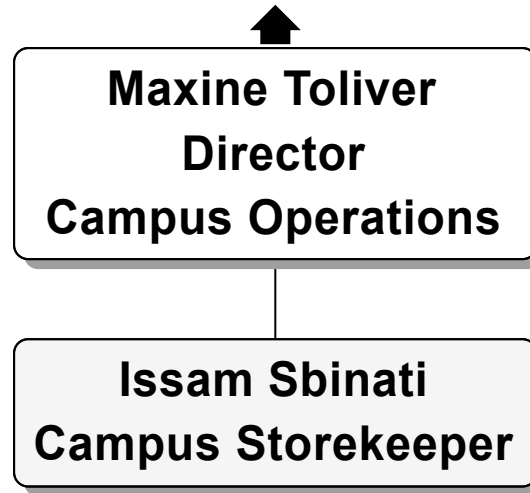
Diana Cifuentes
Office Manager

Richard Fiesel
Associate Dean
Mathematics, Sciences, Technologies, and Business

Full-time Faculty
Mathematics, Sciences, Technologies, and Business







Chad Knights
Vice President
IET and College Computing

Melissa Palys
Executive Assistant

Paula Ford
Dean
Information and Engineering Technologies

Joshua Labrie
Director
NOVA SySTEMic

Allen Sinner
Deputy CIO
and Chief Technology Officer

Jack Bidlack
Program Manager

Paula Ford
Dean
Information and Engineering Technologies

Greer Muldoon
Executive Assistant

Judi Johnson-Bartlett
Associate Dean
Information and Engineering Technologies

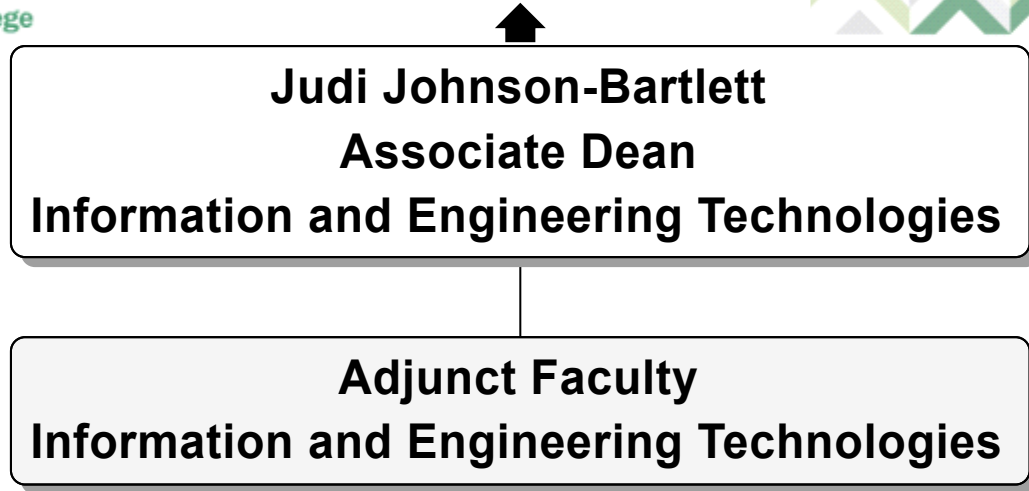
Nira Shahi
Academic Advisor

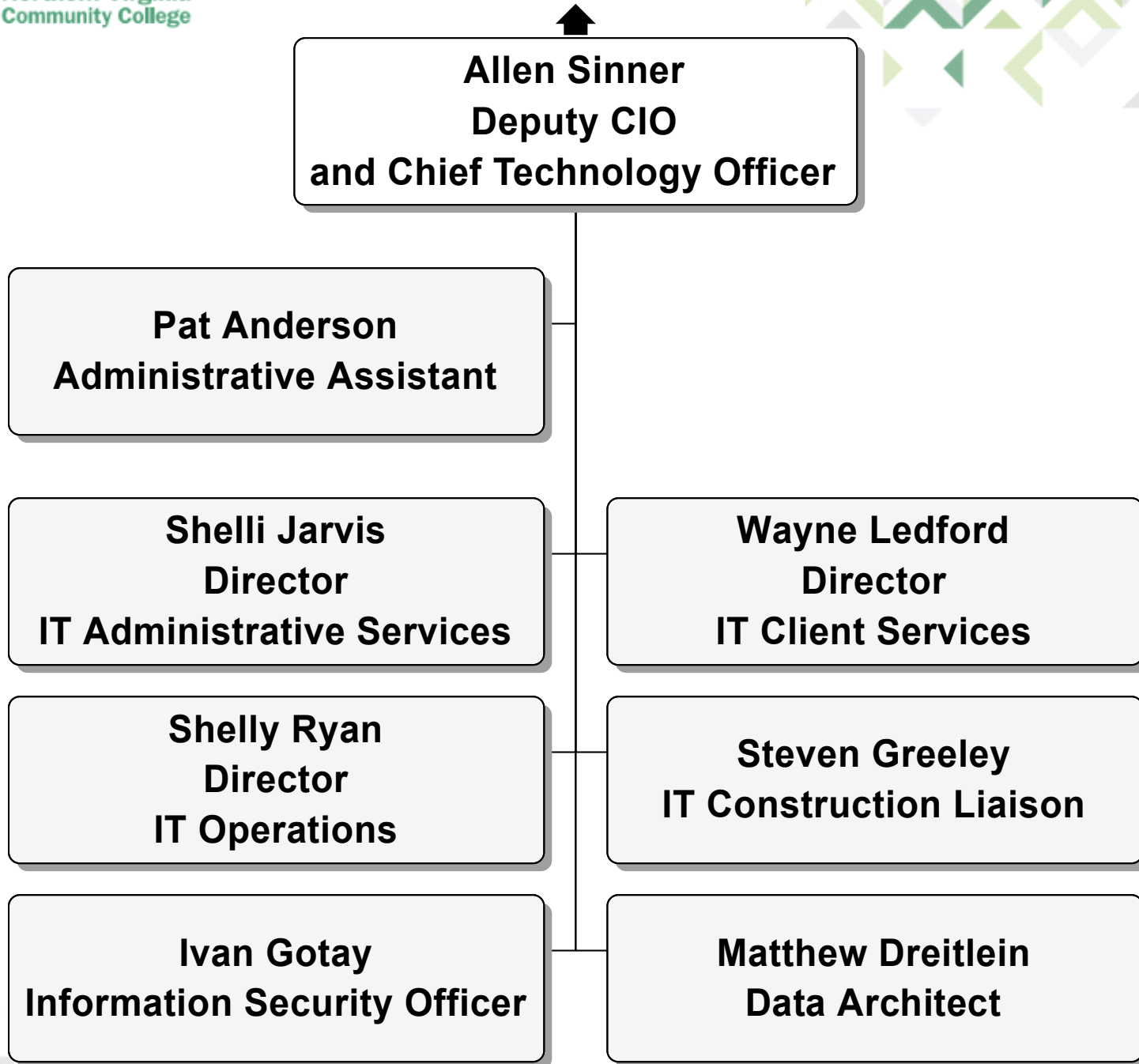
Daniel Tompkins
Academic Advisor

Full-time Faculty
Information and Engineering Technologies

Laura Brown
Academic Advisor

Deborah Fleming
Academic Advising Specialist







Joshua Labrie
Director
NOVA SySTEMic

Aleksander Marthinussen
Program Manager, SySTEMic Solutions

Natasha Schuh-Nuhfer
STEM Education Coordinator

Christine Hirst
STEM Education Coordinator

Richard Sewell
Fabrication Lab Coordinator

Mary Ratcliff
STEM Fabrication Lab Coordinator

Rochel Bussell
Business Administrative Coordinator

Christopher Russell
IET Project Manager



Jack Bidlack
Program Manager

Vacant
IET Recruitment
and Engagement Specialist

Bryce Lenon
NOVA IET PR& Marketing Coordinator

Sedrick Settle
IET Program Coordinator

Miguel Chaves
Career and Technical Education Coordinator

Eun-Woo Chang
Vice President and Chief Academic Officer
Academic Affairs

Sharon Finch
Executive Assistant

Matthew Todd
Dean
NOVA Libraries

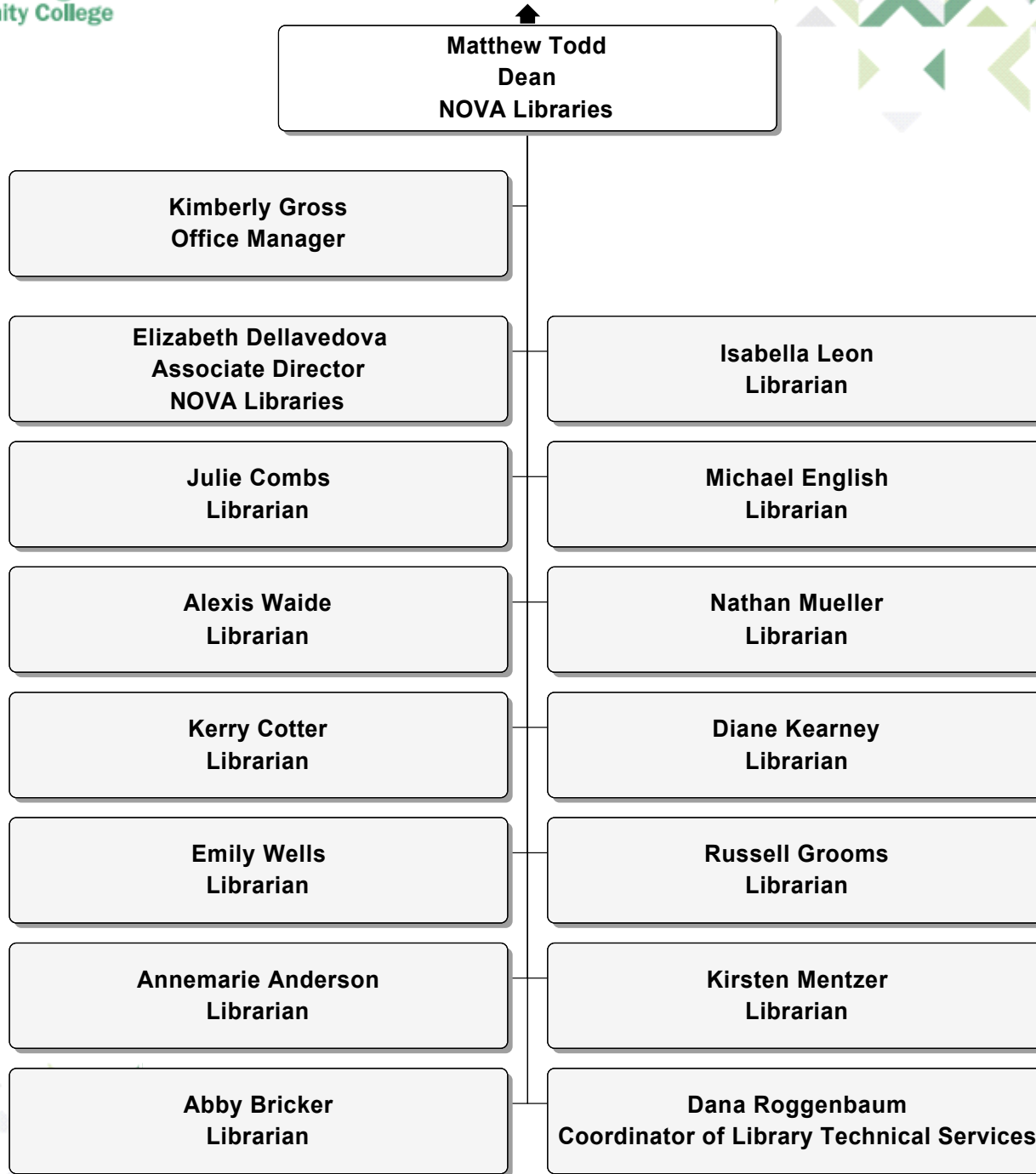
Jennifer Daniels
Associate Vice President
Academic Affairs

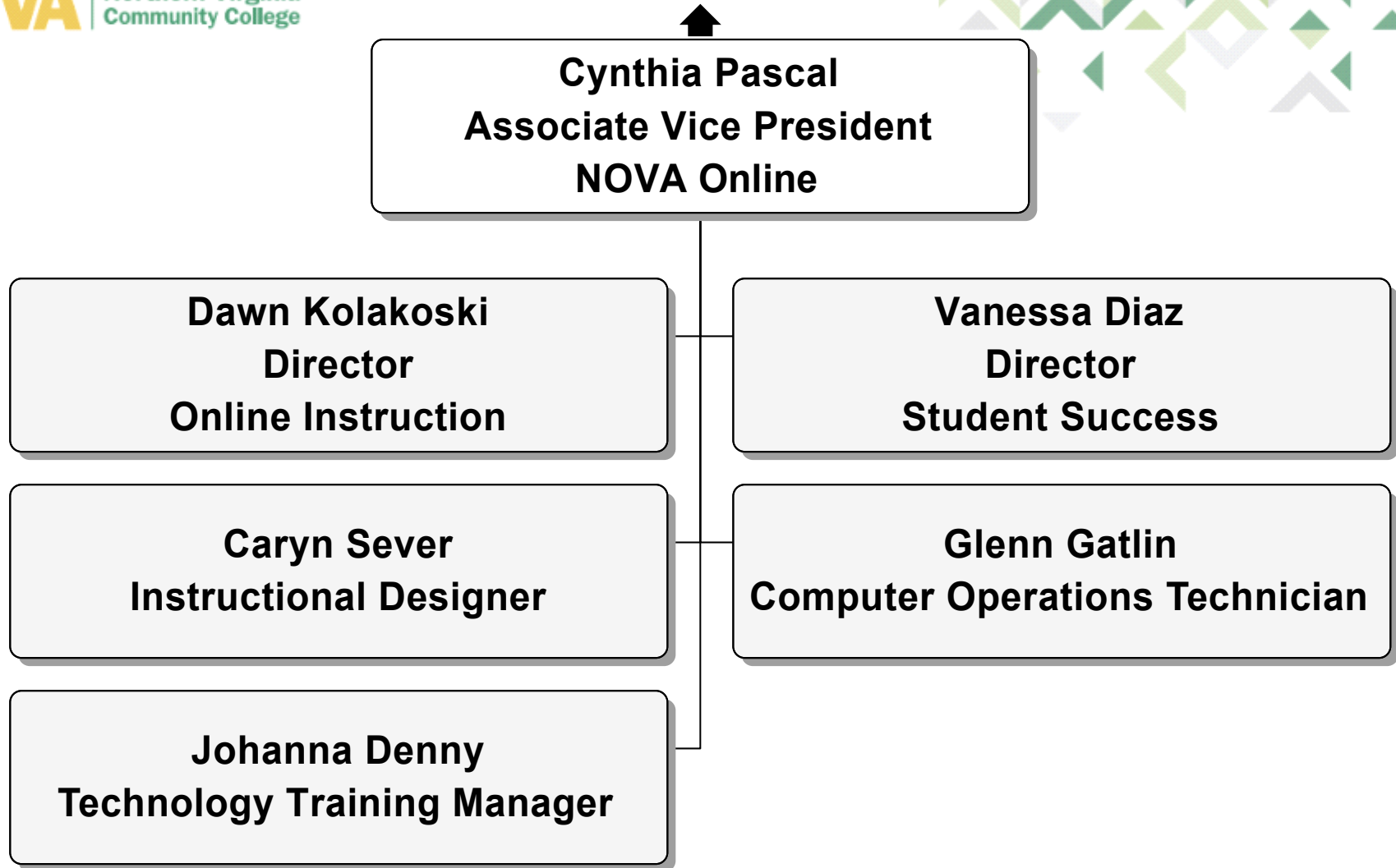
Sarah Mohamed
Interim Director
CCI

Cynthia Pascal
Associate Vice President
NOVA Online

Indigo Ericksen
Interim Director
Faculty Development

Malcolm Pace
Director
Dual Enrollment, Outreach and Recruitment







```
graph TD; JD["Jennifer Daniels  
Associate Vice President  
Academic Affairs"]; AJ["Abbey Jones  
Associate Director  
Specialty Programs"]; JN["Jennifer Nelson  
Director  
University Transfer and Initiatives"]; CL["Casey Lukszo  
Associate Director  
Curriculum and Innovative Education"]; CS["Christiane Silva  
Curriculum Technology Specialist"]; JD --- AJ; JD --- JN; JD --- CL; JD --- CS;
```

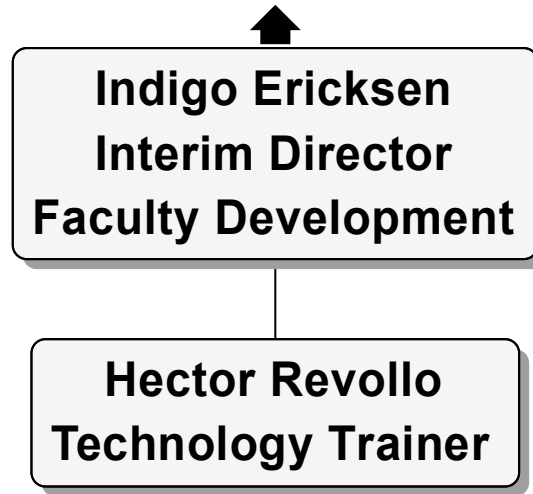
Jennifer Daniels
Associate Vice President
Academic Affairs

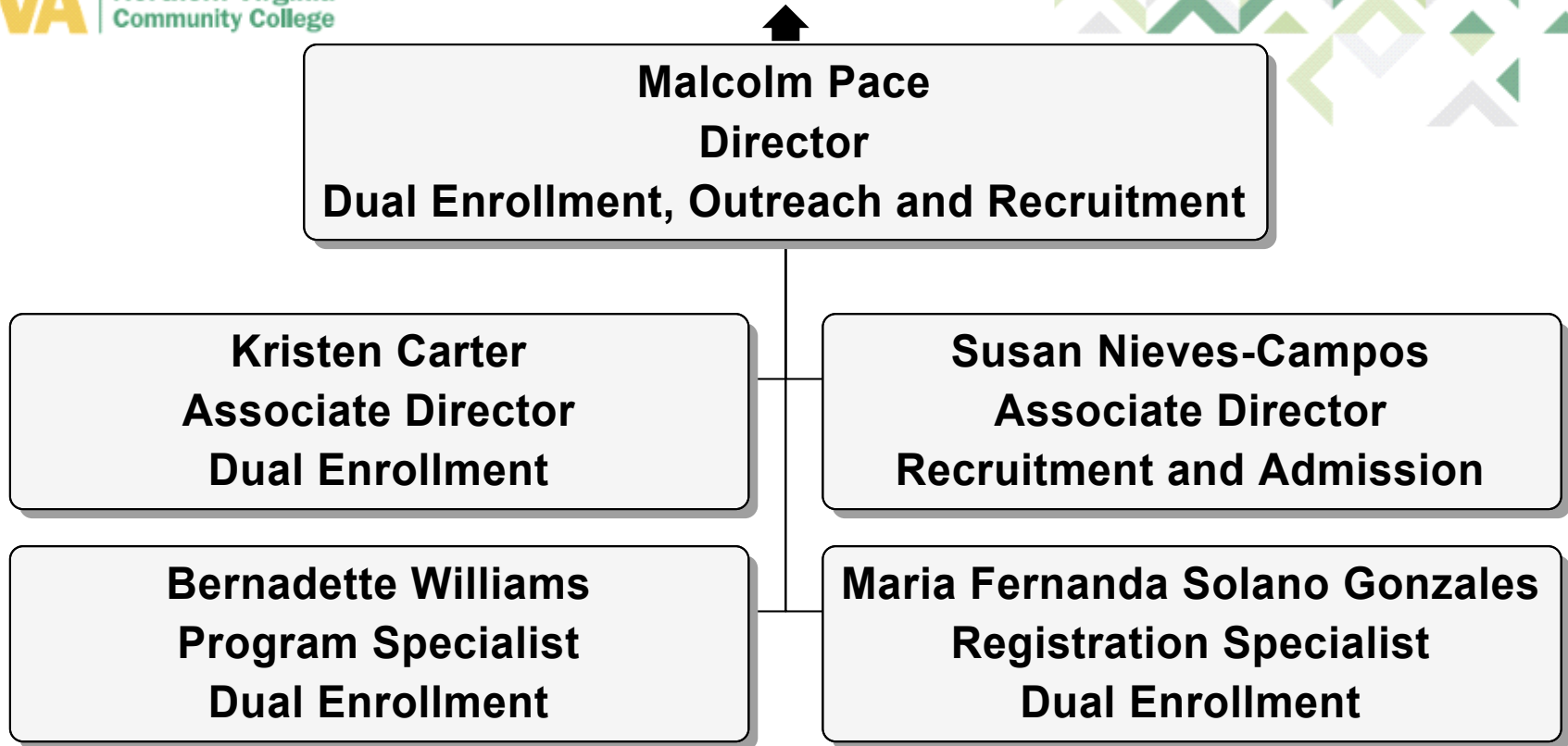
Abbey Jones
Associate Director
Specialty Programs

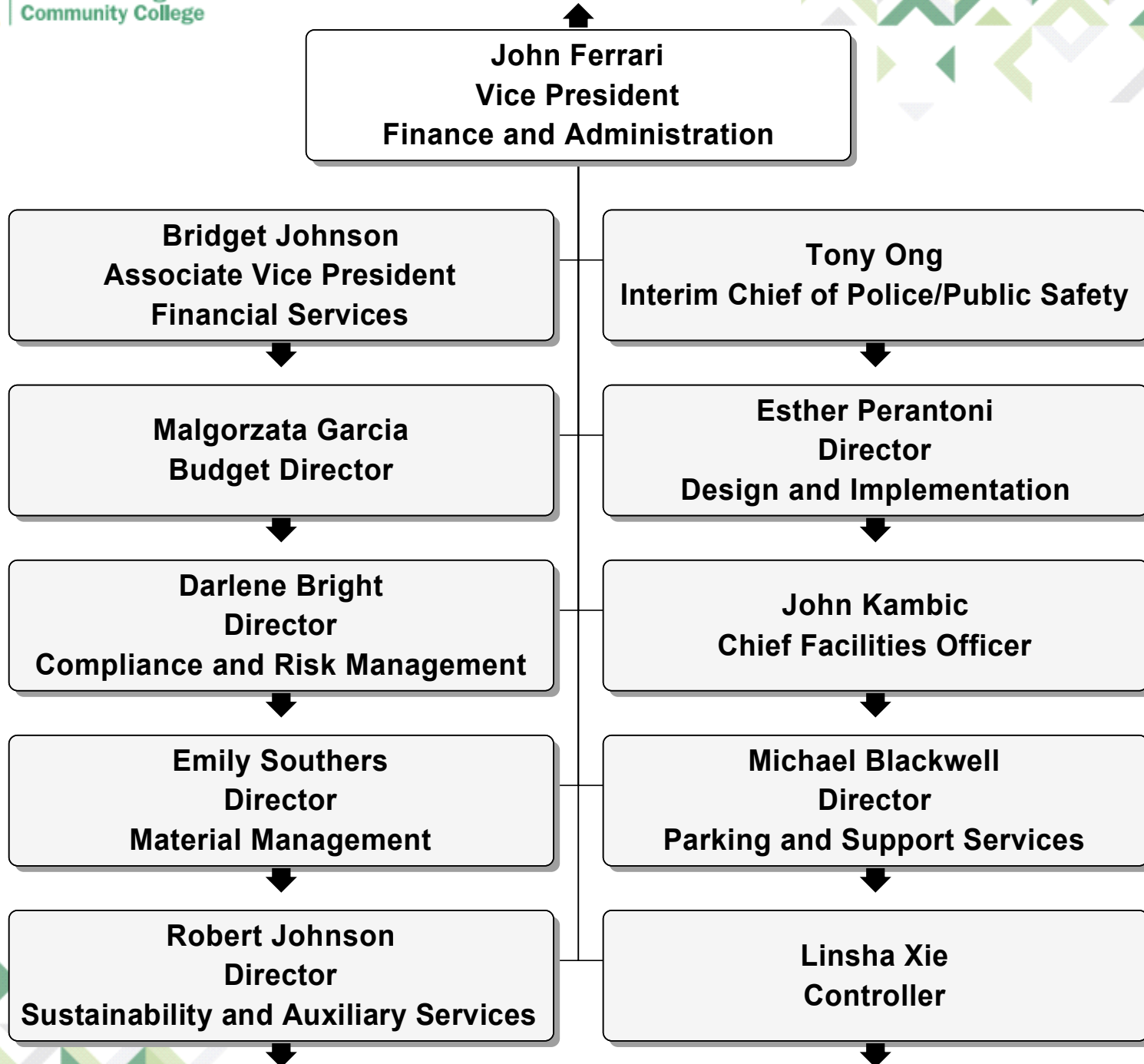
Jennifer Nelson
Director
University Transfer and Initiatives

Casey Lukszo
Associate Director
Curriculum and Innovative Education

Christiane Silva
Curriculum Technology Specialist









Bridget Johnson
Associate Vice President
Financial Services

Diana Azar
Administrative Assistant

Mitchell Markon
Director
Business Services

Imelda Mccuiston
Financial Services Manager

Ester Shapiro
Fiscal Technician II

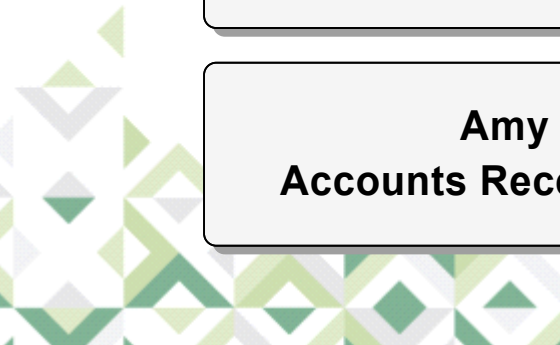
Amy Colussy
Accounts Receivable Specialist

Edward Gomes
Assistant Business Office Supervisor

Jennifer Karpel
Fiscal Technician II

Meskerem Amsalu
Fiscal Technician II

Kathleen Wang
Fiscal Technician



Tony Ong
Interim Chief of Police/Public Safety

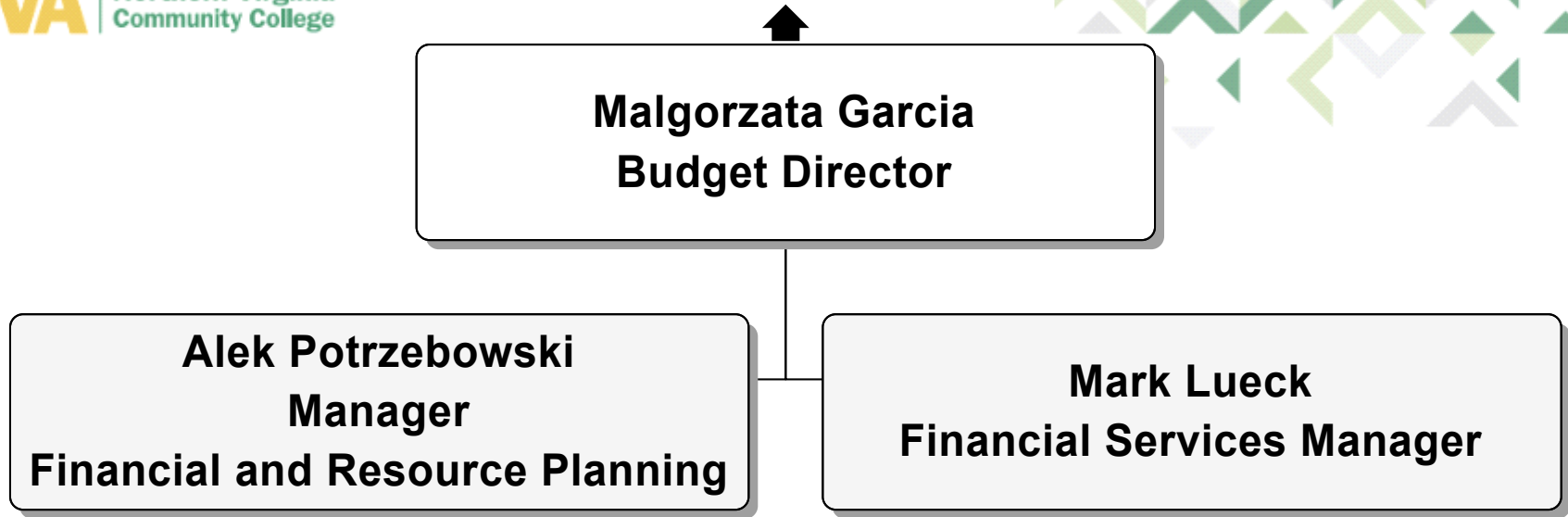
Dana Reilly
Executive Assistant

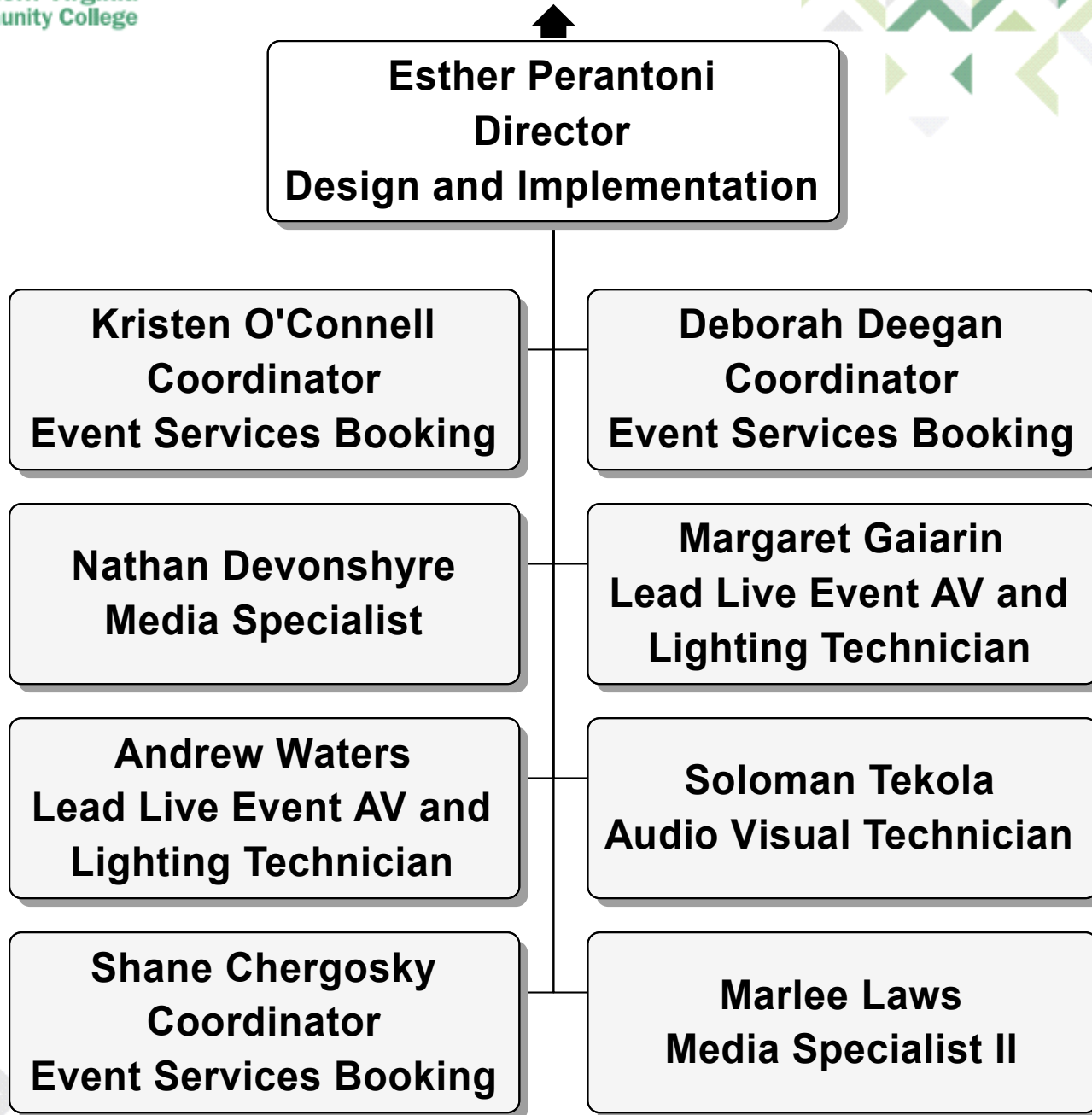
David Cook
Director
Office of Emergency Management and Safety

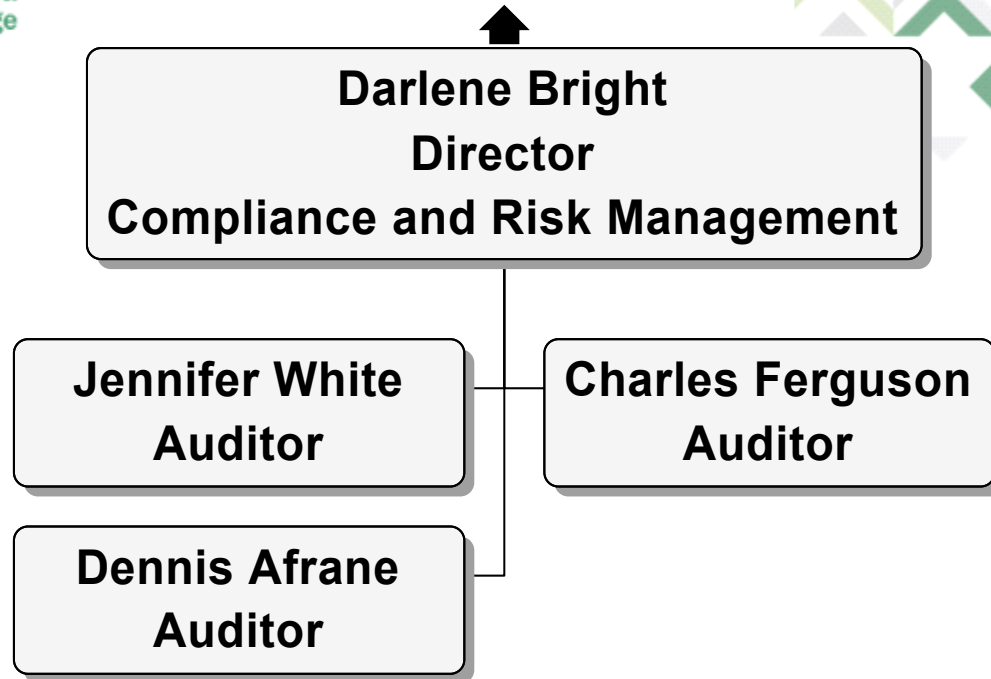
John Stasiowski
Lieutenant

John Degurse
Lieutenant

Matthew Borders
Lieutenant







John Kambic
Chief Facilities Officer

Kimberly Scites
Manager
Facilities Mangement

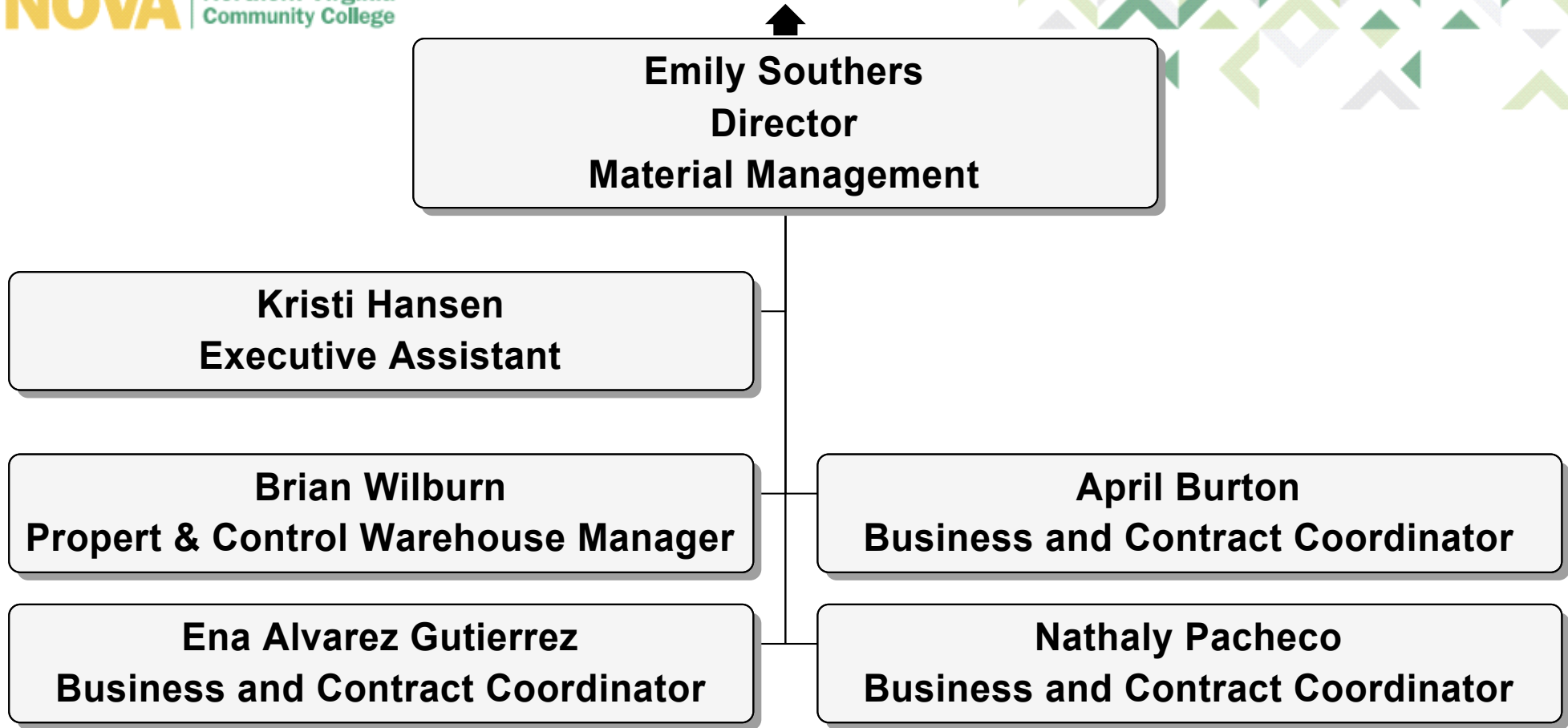
Mary Coughlin
Director
Capital Projects

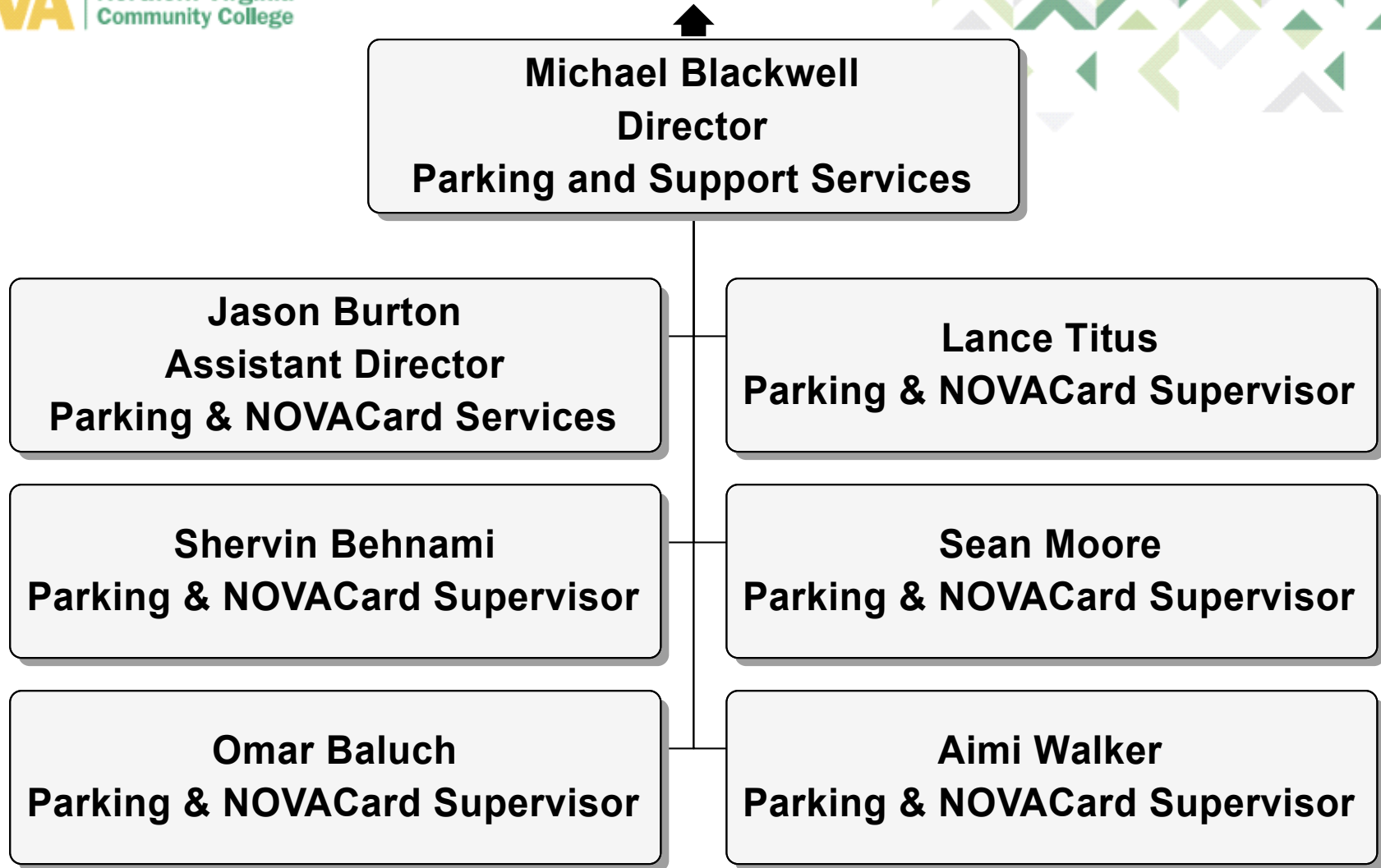
Evan Wright
Interim Manager
Environmental Services

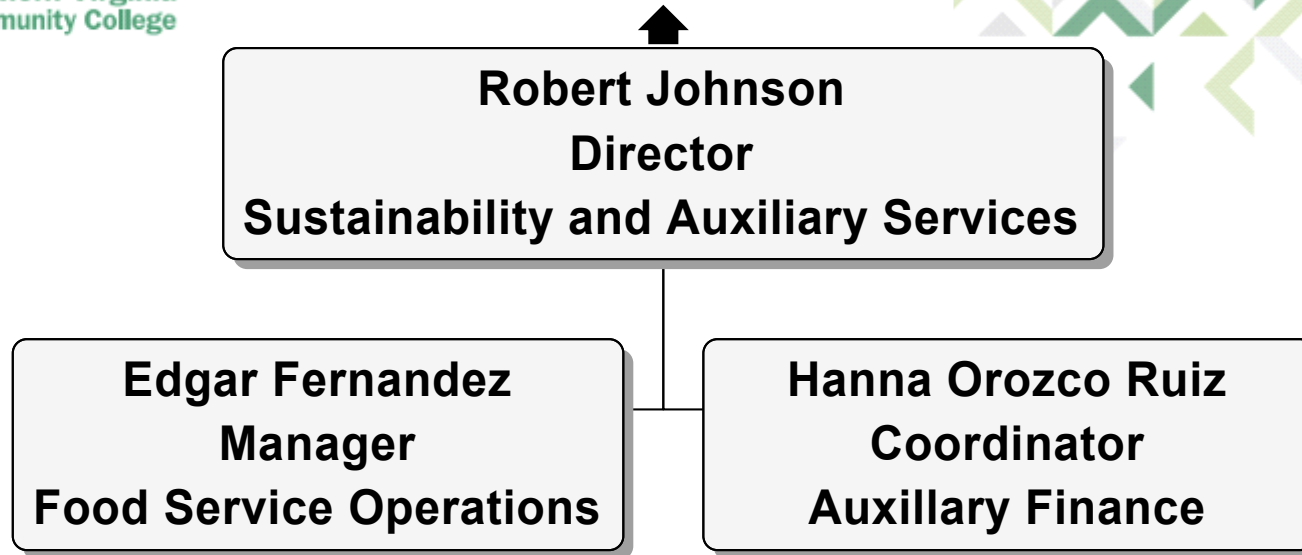
Tchakka Barrett
Director
Operations

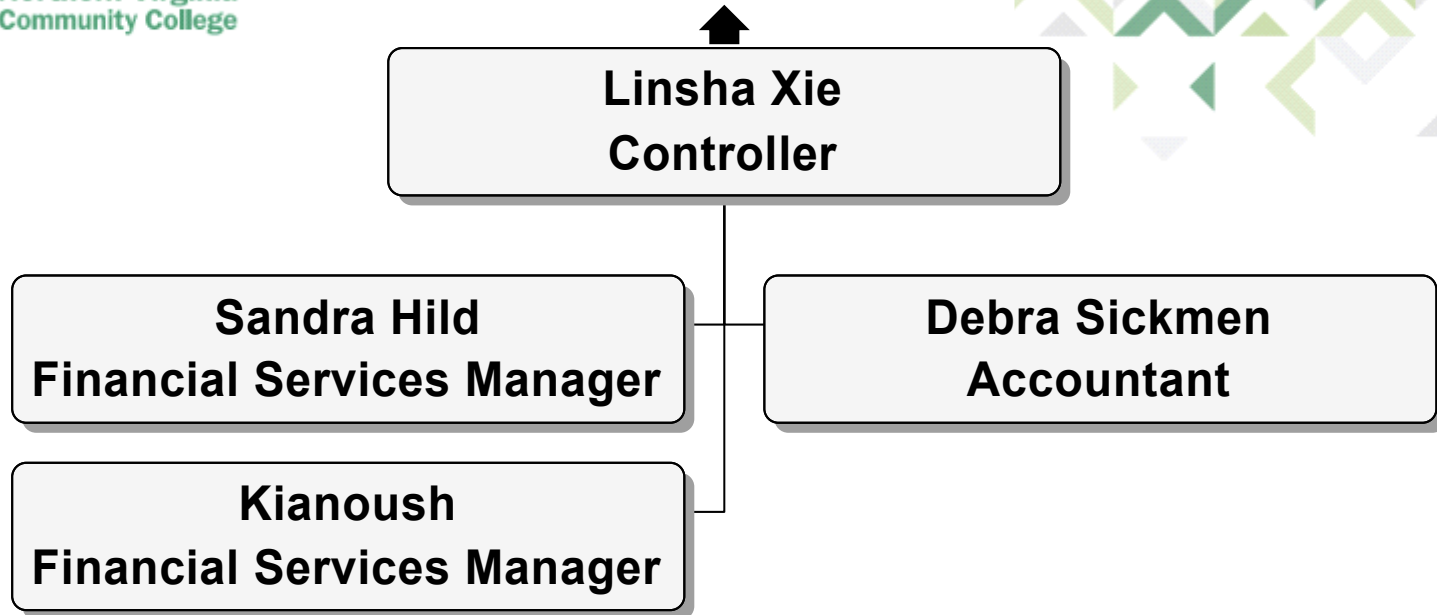
Vacant
Associate Director
Project Management

Jill Vass
Manager, Space Planning and Design









Steven Partridge
Vice President
Strategy, Research, and Workforce Innovation

Hope Mathis
Executive Assistant

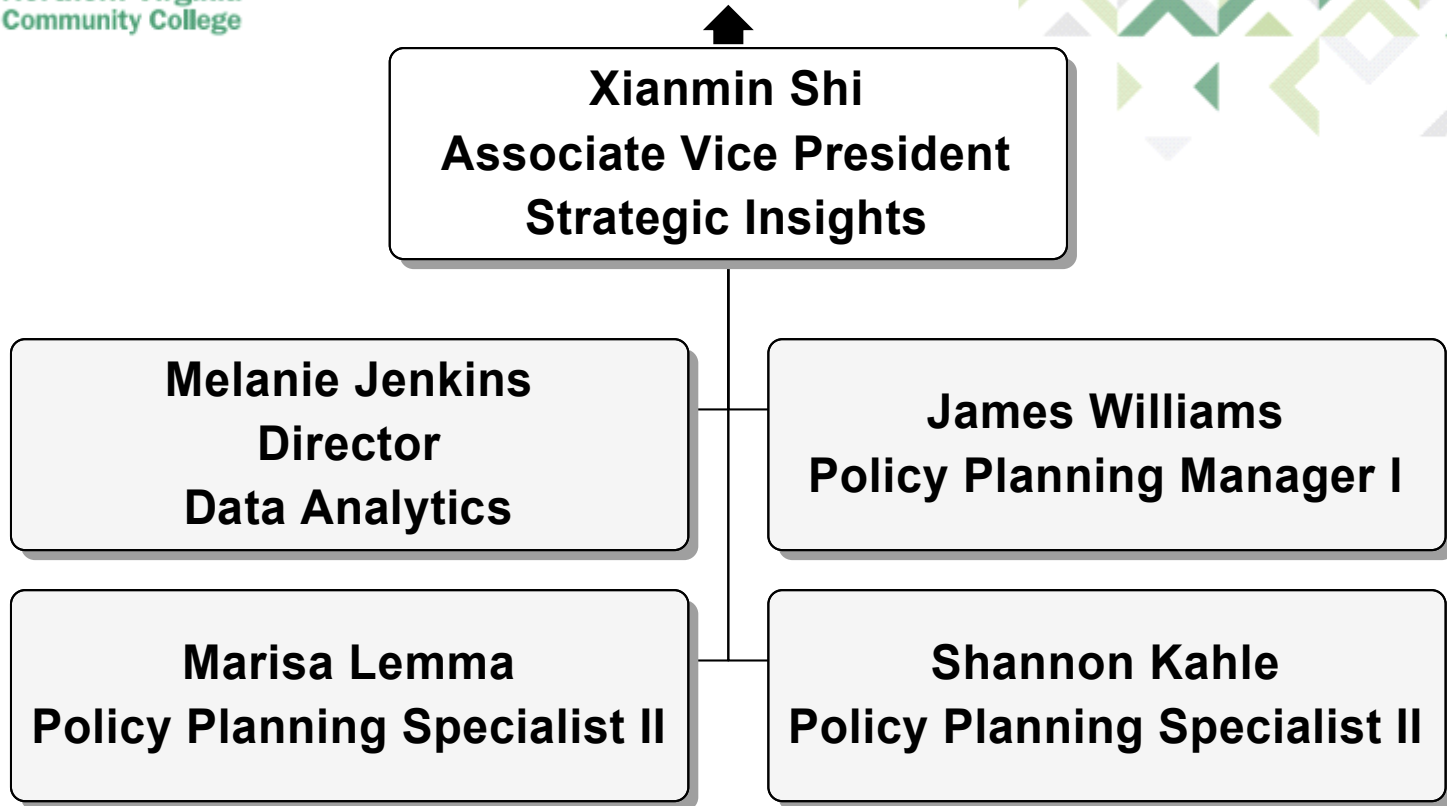
Xianmin Shi
Associate Vice President
Strategic Insights

Dana Fallon
Director
Career Services and Business Engagement

Sarah Collins
Director
Marketing and Communications

Keila Louzada
Director
Workforce Development

Teresa Sweeney
Director
Grants



Keila Louzada
Director
Workforce Development

Katherine Jennings
Associate Director
Allied Health Programming Manager

Cynthia Hatch
Associate Director
TESOL and Business Programs

Jennifer Merrill
Manager
Student Services

Michael Wood
Associate Director
IT Programming

Silvana Barretto
Technical and Operations Manager

Clarence Johnson
Associate Director
Skilled Trades and Transportation Programs



Dana Fallon
Director
Career Services and Business Engagement

Brent Via
Associate Director
Career Planning and Development

Rachel Krempasky
Coordinator
Guaranteed Interview Program

Laetitia Gnago
Coordinator
Regional Internship Initiative

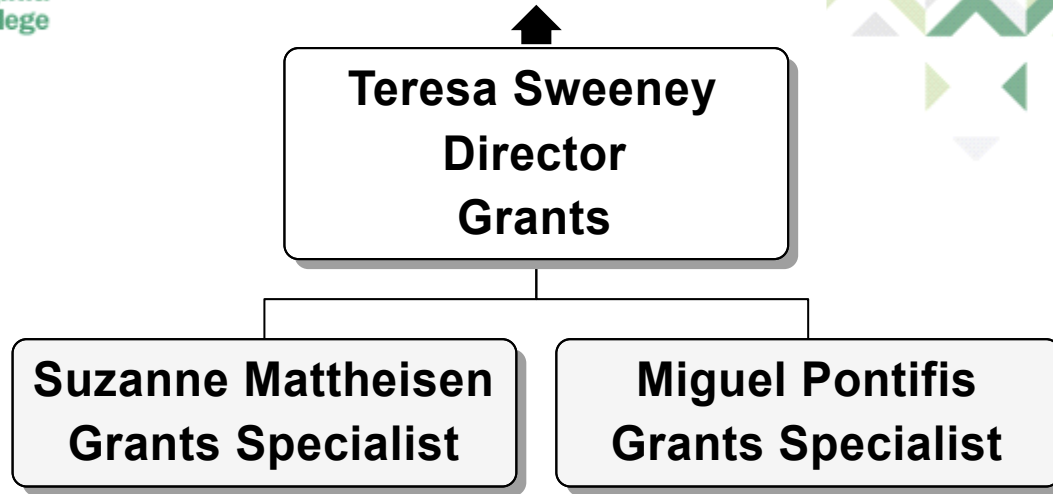
Antoine Harris
Special Programs and Data Coordinator

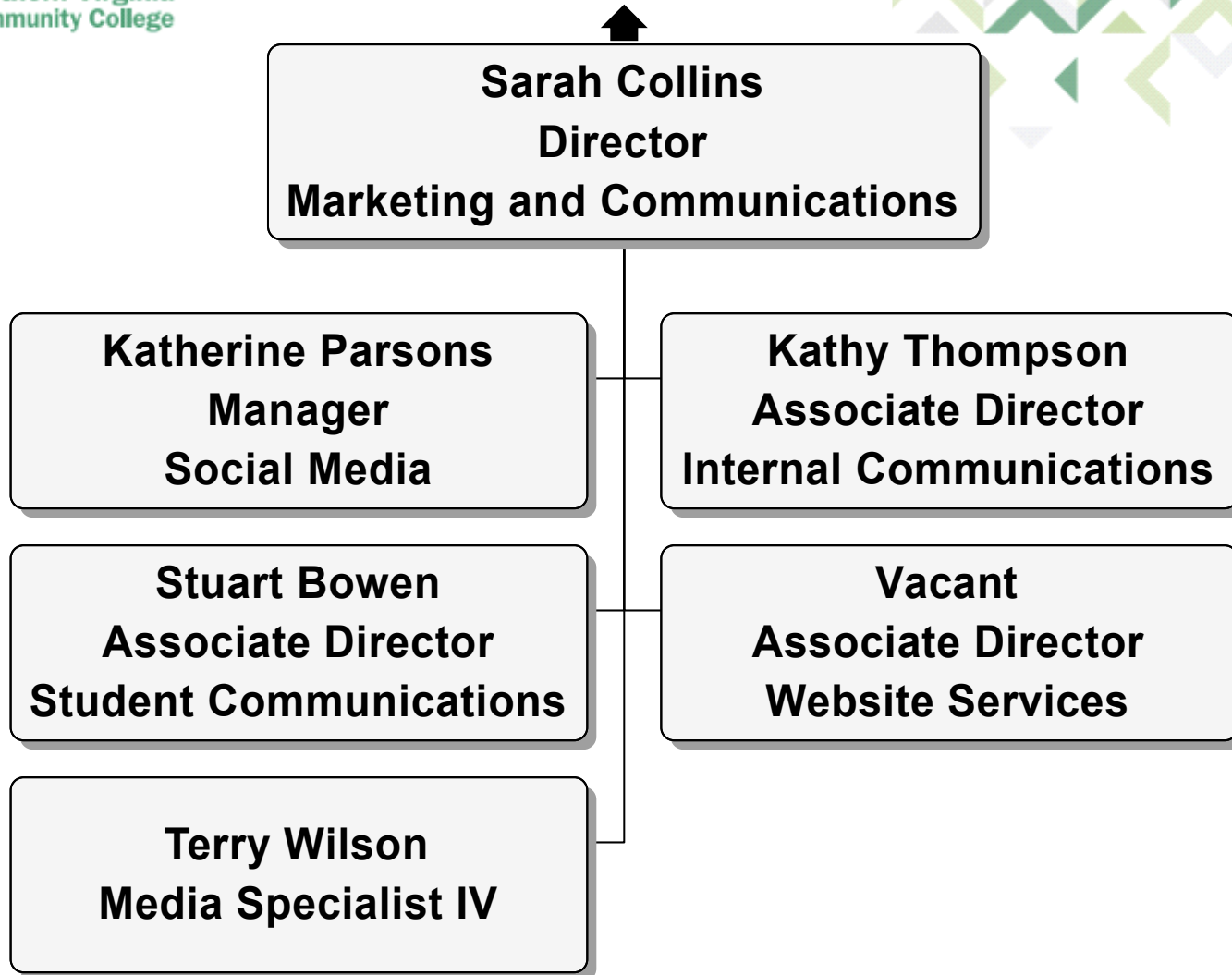
Sterling Smith
Recruiting Programs Manager

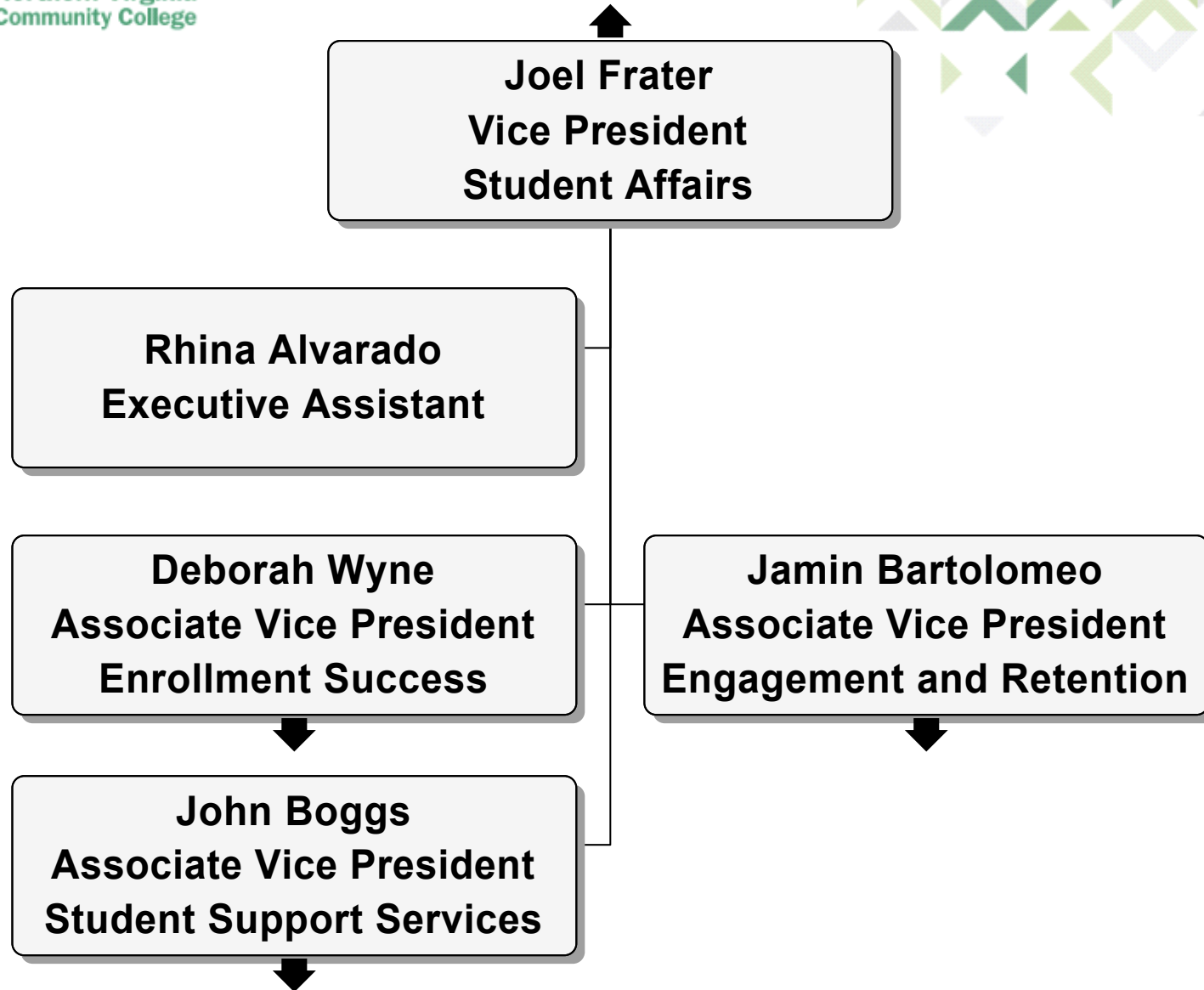
Daja Nolan
Specialist
Guaranteed Interview Program

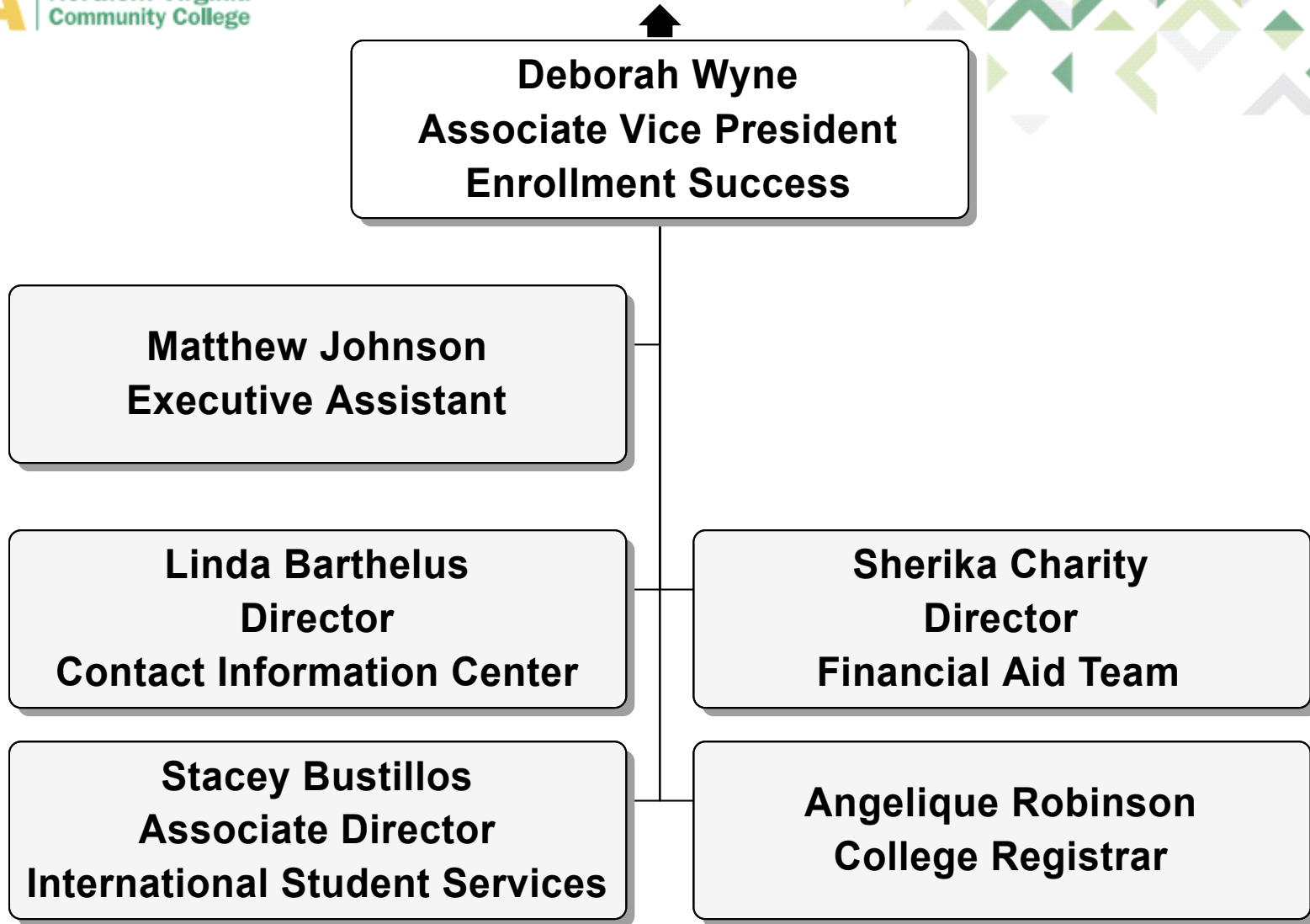
William Schmidt
Manger
Business Engagement and Industry Initiatives











Jamin Bartolomeo
Associate Vice President
Engagement and Retention

Huma Jamshid
Administrative Assistant

Matthew Coats
Director
Student Rights and Responsibilities

Kimberly Wright
Director
Advising

Nigel Word
Director
Engagement and Leadership, Student Life



John Boggs
Associate Vice President
Student Support Services

Takesha McMiller
Director
Military and Veteran Services

La'Tonia White
Director
Financial Stability and Advocacy

Regina Sanders
Director
Wellness and Mental Health

Krystal Edmead
Director
Accommodations and Accessibility



Charlotte Calobrisi
Associate Vice President
Human Resources

Tammy Currie
Senior Director
Human Resources and EEO

Shabnam Hadi
HR Administrator

Dahlia Henry-Tett
Chief Wellness Officer

Jamie Ellis
Associate Director
Faculty Compensation and Credentialing

Shawn Addison
Employee Ombuds

Tammy Currie
Senior Director
Human Resources and EEO

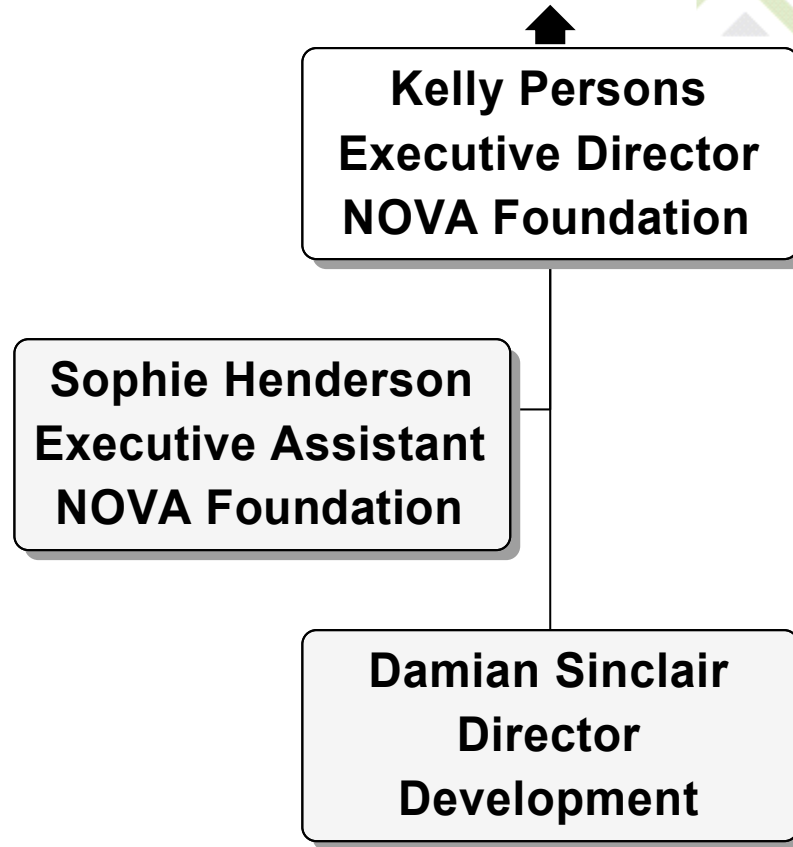
Kimberly Jewell
Associate Director
Benefits Administration

Daniel Kaufmann
Associate Director
Employee Relations

Yesenia Bidwell
Associate Director
Organizational Learning and Development

Sarah Patton
Associate Director
HRIS

Shiwanda Key
Associate Director
Classified Employment and Compensation




```
graph TD; A[Hannah Stoneburner  
Associate System Counsel  
and Assistant Attorney General] --> B[Akiva Kirkland  
Legal Assistant];
```

Hannah Stoneburner
Associate System Counsel
and Assistant Attorney General

Akiva Kirkland
Legal Assistant

