

# Successful Course Completion Rates of First-Time to NOVA Students by Full-/Part-Time Status and Demographics: Fall 2009 through Fall 2013 Cohorts



Research Report No. 08-14

Office of Institutional Research, Planning, and Assessment  
SEPTEMBER 2014

## **NORTHERN VIRGINIA COMMUNITY COLLEGE**

### **OFFICE OF INSTITUTIONAL RESEARCH, PLANNING, AND ASSESSMENT**

The purpose of the Office of Institutional Research, Planning, and Assessment is to conduct analytical studies and provide information in support of institutional planning, policy formulation and decision making. In addition, the office provides leadership and support in research related activities to members of the NOVA community engaged in planning and evaluating the institution's success in accomplishing its mission.

When citing data from this report, the Northern Virginia Community College (NOVA) Office of Institutional Research, Planning, and Assessment must be cited as the source.

4001 Wakefield Chapel Road  
Annandale, VA 22003-3796  
(703) 323-3129

[www.nvcc.edu/oir](http://www.nvcc.edu/oir)

**Successful Course Completion Rates of First-Time to NOVA Students by Full-/Part-Time Status and Demographics: Fall 2009 through Fall 2013 Cohorts**

**Table of Contents**

Introduction ..... 1

Section 1. Successful Course Completion Rates of First-Time to NOVA Students by Full-/Part-Time Status ..... 2

Section 2. Successful Course Completion Rates of First-Time to NOVA Students by Full-/Part-Time Status and Gender..... 3

Section 3. Successful Course Completion Rates of First-Time to NOVA Students by Full-/Part-Time Status and Age ..... 5

Section 4. Successful Course Completion Rates of First-Time to NOVA Students by Full-/Part-Time Status and Race/Ethnicity ..... 7

Section 5. Successful Course Completion Rates of First-Time to NOVA Students by Full-/Part-Time Status and Program Placement ..... 9

## List of Tables

Table 1. Successful Course Completion Rates by Full-/Part-Time Status: Fall 2009 through Fall 2013 Cohorts.....	2
Table 2. Successful Course Completion Rates by Full-/Part-Time Status and Gender: Fall 2009 through Fall 2013 Cohorts .....	3
Table 3. Successful Course Completion Rates by Full-/Part-Time Status and Age: Fall 2009 through Fall 2013 Cohorts .....	5
Table 4. Successful Course Completion Rates by Full-/Part-Time Status and Race/Ethnicity: Fall 2009 through Fall 2013 Cohorts.....	7
Table 5. Successful Course Completion Rates by Full-/Part-Time Status and Program Placement: Fall 2009 through Fall 2013 Cohorts .....	9

## List of Figures

Figure 1. Successful Course Completion Rates by Full-/Part-Time Status: Fall 2009 through Fall 2013 Cohorts .....	2
Figure 2. Successful Course Completion Rates of Full-Time Students by Gender: Fall 2009 through Fall 2013 Cohorts .....	3
Figure 3. Successful Course Completion Rates of Part-Time Students by Gender: Fall 2009 through Fall 2013 Cohorts .....	4
Figure 4. Successful Course Completion Rates of Full-Time Students by Age: Fall 2009 through Fall 2013 Cohorts .....	6
Figure 5. Successful Course Completion Rates of Part-Time Students by Age: Fall 2009 through Fall 2013 Cohorts .....	6
Figure 6. Successful Course Completion Rates of Full-Time Students by Race/Ethnicity: Fall 2009 through Fall 2013 Cohorts .....	8
Figure 7. Course Completion Rates of Part-Time Students by Race/Ethnicity: Fall 2009 through Fall 2013 Cohorts .....	8
Figure 8. Successful Course Completion Rates of Full-Time Students by Program Placement: Fall 2009 through Fall 2013 Cohorts.....	10
Figure 9. Successful Course Completion Rates of Part-Time Students by Program Placement: Fall 2009 through Fall 2013 Cohorts.....	10

## **Successful Course Completion Rates of First-Time to NOVA Students by Full-/Part-Time Status and Demographics: Fall 2009 through Fall 2013 Cohorts**

### **Introduction**

This Report examines the rates of successful course completion of first-time to NOVA students by full-/part-time status and by demographics for five cohorts of students from Fall 2009 through Fall 2013. Successful course completion is defined as the proportion of students completing a course with a grade of "A," "B," "C," "P," or "S." The data presented in this report reflects all courses taken by first-time to NOVA students with the exception of Extended Learning Institute courses.

Overall, although course completion rates were similar for full- and part-time students, full-time students did have slightly higher completion rates in each cohort. Other findings of this Report include:

- Female students had consistently higher successful course completion rates than male students, regardless of full- or part-time status.
- Students ages 18 to 21 had the lowest rates of course success, regardless of full- or part-time status.
- Among full-time students, older students (ages 30 to 44 or ages 45 and over) tended to have higher rates of successful course completion than other age groups. Among part-time students, however, those under 18 generally had the highest course completion rates.
- Among both full- and part-time students, Black and Hispanic students tended to have lower rates of successful course completion compared to other racial/ethnic groups. Asian and Other students generally had the highest rates of successful course completion in each cohort.
- Full-time students placed in degree or certificate programs tended to have higher rates of successful course completion than part-time program-placed students. However, part-time students who were not placed in a degree or certificate program had higher rates of successful course completion than full-time, Not Placed students.

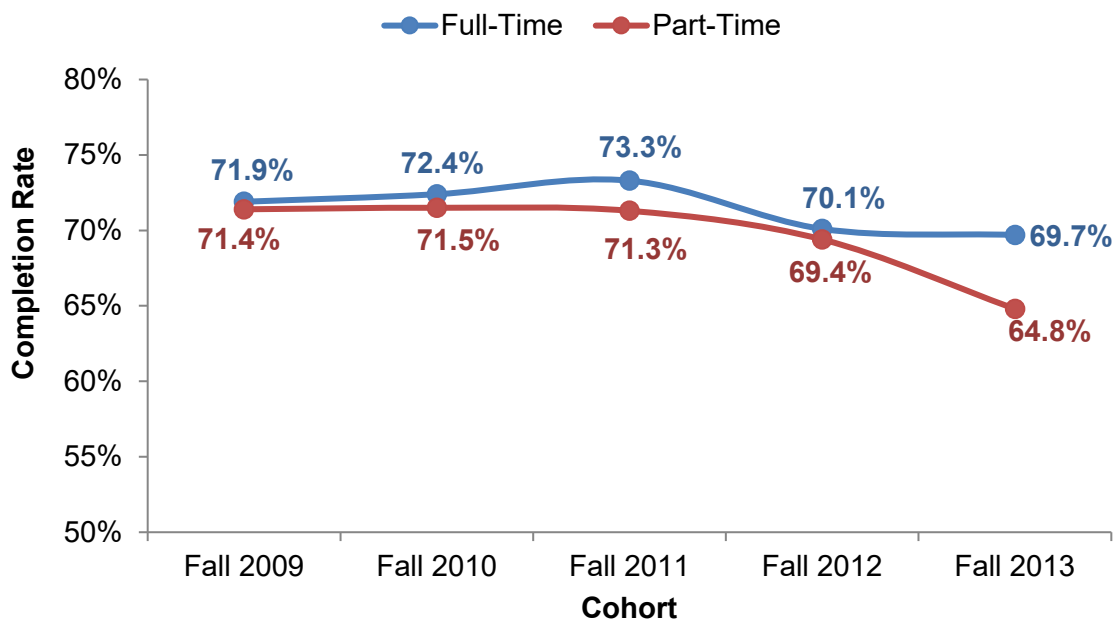
## Section 1. Successful Course Completion Rates of First-Time to NOVA Students by Full-/Part-Time Status

Table 1 and Figure 1 show the course completion rates for first-time to NOVA students from the Fall 2009 through Fall 2013 cohorts. Although course completion rates were similar for full- and part-time students, full-time students did have slightly higher completion rates in each cohort. Course completion rates for part-time students generally showed minimal change from year to year until most recently with a four percentage point decrease from the Fall 2012 to Fall 2013 cohorts.

**Table 1. Successful Course Completion Rates by Full-/Part-Time Status: Fall 2009 through Fall 2013 Cohorts**

Status	Fall 2009 Cohort			Fall 2010 Cohort			Fall 2011 Cohort			Fall 2012 Cohort			Fall 2013 Cohort		
	N	Successful		N	Successful		N	Successful		N	Successful		N	Successful	
		#	%		#	%		#	%		#	%		#	%
Full-Time	25,535	18,350	71.9	24,466	17,712	72.4	24,524	17,979	73.3	25,529	17,908	70.1	27,156	18,928	69.7
Part-Time	10,398	7,427	71.4	10,610	7,589	71.5	10,088	7,198	71.3	11,484	7,968	69.4	10,643	6,893	64.8
<b>Total</b>	<b>35,933</b>	<b>25,777</b>	<b>71.7</b>	<b>35,076</b>	<b>25,301</b>	<b>72.1</b>	<b>34,612</b>	<b>25,177</b>	<b>72.7</b>	<b>37,013</b>	<b>25,876</b>	<b>69.9</b>	<b>37,799</b>	<b>25,821</b>	<b>68.3</b>

**Figure 1. Successful Course Completion Rates by Full-/Part-Time Status: Fall 2009 through Fall 2013 Cohorts**



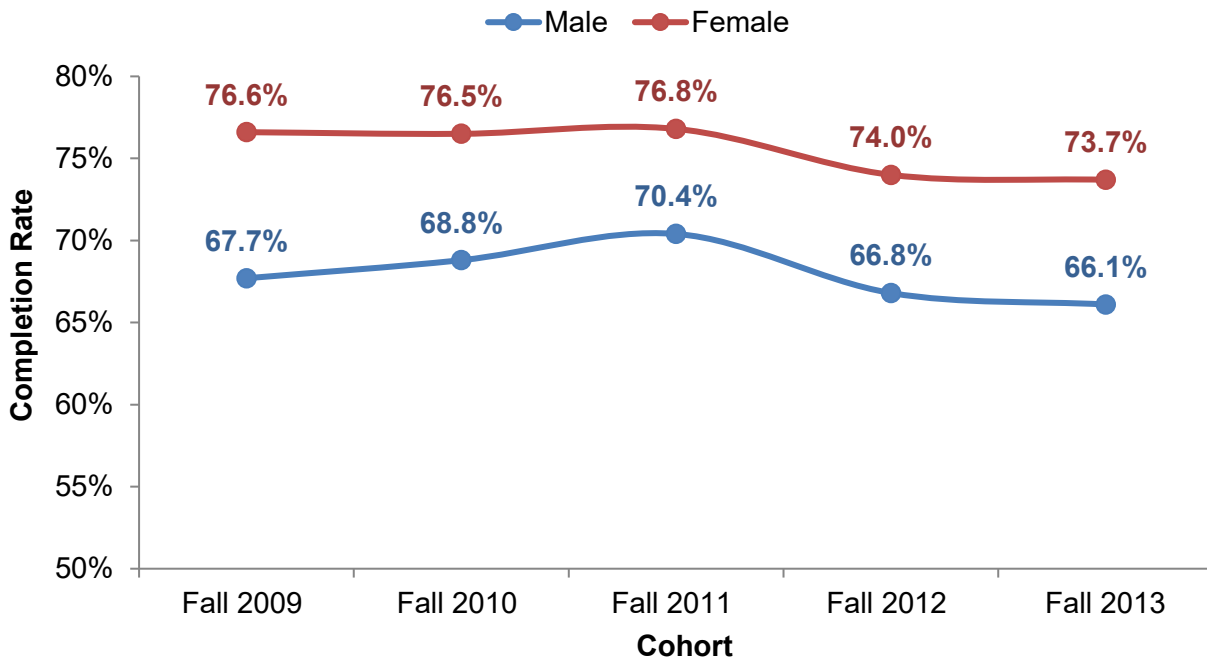
**Section 2. Successful Course Completion Rates of First-Time to NOVA Students by Full-/Part-Time Status and Gender**

Table 2, Figure 2, and Figure 3 (next page) show the course completion rates of first-time to NOVA full- and part-time students by gender. Overall, female students had consistently higher course completion rates than male students, regardless of full- or part-time status. In each cohort, female students successfully completed their courses at rates of 70 to 77 percent, while male students successfully completed their courses at rates of 60 to 69 percent.

**Table 2. Successful Course Completion Rates by Full-/Part-Time Status and Gender: Fall 2009 through Fall 2013 Cohorts**

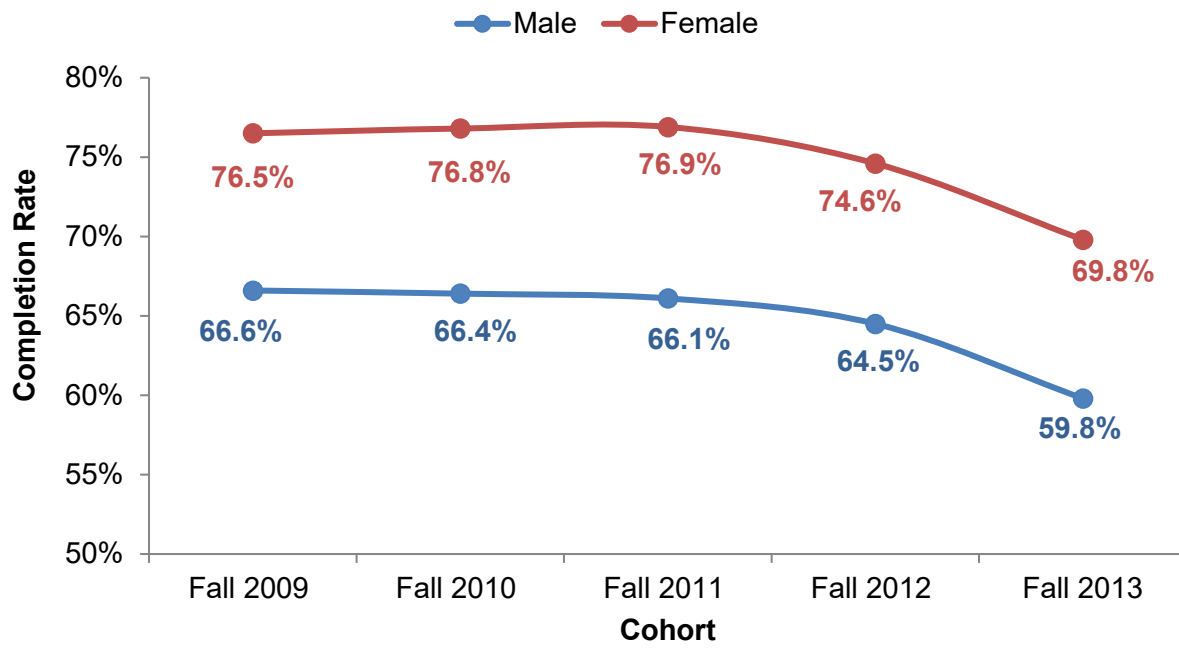
Status	Gender	Fall 2009 Cohort			Fall 2010 Cohort			Fall 2011 Cohort			Fall 2012 Cohort			Fall 2013 Cohort		
		N	Successful #	%	N	Successful #	%	N	Successful #	%	N	Successful #	%	N	Successful #	%
Full-Time	Male	13,555	9,173	67.7	13,069	8,993	68.8	13,391	9,429	70.4	13,733	9,179	66.8	14,441	9,551	66.1
	Female	11,980	9,177	76.6	11,397	8,719	76.5	11,133	8,550	76.8	11,796	8,729	74.0	12,715	9,377	73.7
Part-Time	Male	5,341	3,558	66.6	5,375	3,569	66.4	5,172	3,419	66.1	5,918	3,815	64.5	5,347	3,196	59.8
	Female	5,057	3,869	76.5	5,235	4,020	76.8	4,916	3,779	76.9	5,566	4,153	74.6	5,296	3,697	69.8

**Figure 2. Successful Course Completion Rates of Full-Time Students by Gender: Fall 2009 through Fall 2013 Cohorts**





**Figure 3. Successful Course Completion Rates of Part-Time Students by Gender: Fall 2009 through Fall 2013 Cohorts**



### Section 3. Successful Course Completion Rates of First-Time to NOVA Students by Full-/Part-Time Status and Age

Table 3 breaks down the course completion rates of full- and part-time students by age. Overall, students ages 18 to 21 had the lowest rates of course success, regardless of full- or part-time status.

**Table 3. Successful Course Completion Rates by Full-/Part-Time Status and Age: Fall 2009 through Fall 2013 Cohorts**

Status	Age	Fall 2009 Cohort			Fall 2010 Cohort			Fall 2011 Cohort			Fall 2012 Cohort			Fall 2013 Cohort		
		N	Successful		N	Successful		N	Successful		N	Successful		N	Successful	
			#	%		#	%		#	%		#	%		#	%
Full-Time	Under 18	412	285	69.2	355	271	76.3	395	324	82.0	407	305	74.9	402	302	75.1
	18-21	21,157	14,724	69.6	20,695	14,670	70.9	20,521	14,660	71.4	21,114	14,432	68.4	23,082	15,691	68.0
	22-24	1,499	1,226	81.8	1,416	1,112	78.5	1,524	1,250	82.0	1,631	1,290	79.1	1,440	1,125	78.1
	25-29	1,220	1,028	84.3	1,108	904	81.6	1,109	924	83.3	1,197	956	79.9	1,068	865	81.0
	30-44	1,034	895	86.6	773	656	84.9	824	695	84.3	921	717	77.9	941	790	84.0
	45 & Over	213	192	90.1	119	99	83.2	151	126	83.4	259	208	80.3	223	155	69.5
Part-Time	Under 18	709	610	86.0	715	646	90.3	434	377	86.9	1,133	1,038	91.6	396	315	79.5
	18-21	5,438	3,367	61.9	5,496	3,418	62.2	5,519	3,482	63.1	6,370	3,796	59.6	6,389	3,553	55.6
	22-24	1,001	796	79.5	1,054	793	75.2	1,061	821	77.4	990	716	72.3	960	715	74.5
	25-29	1,217	1,007	82.7	1,194	1,000	83.8	1,082	847	78.3	1,093	902	82.5	973	767	78.8
	30-44	1,371	1,149	83.8	1,491	1,234	82.8	1,425	1,206	84.6	1,301	1,063	81.7	1,272	1,075	84.5
	45 & Over	662	498	75.2	660	498	75.5	567	465	82.0	597	453	75.9	653	468	71.7

Figure 4 (next page) shows the course completion rates of full-time students by age. Among full-time students, older students (ages 30 to 44 or ages 45 and over) tended to have higher rates of successful course completion than younger students. However, students under 18 saw the largest increase of any age group, with course completion rates jumping 13 percentage points from Fall 2008 to Fall 2010. Also of note, the course completion rate of full-time students ages 45 and over decreased by 13 percentage points between the Fall 2011 and Fall 2013 cohorts.

**Figure 4. Successful Course Completion Rates of Full-Time Students by Age: Fall 2009 through Fall 2013 Cohorts**

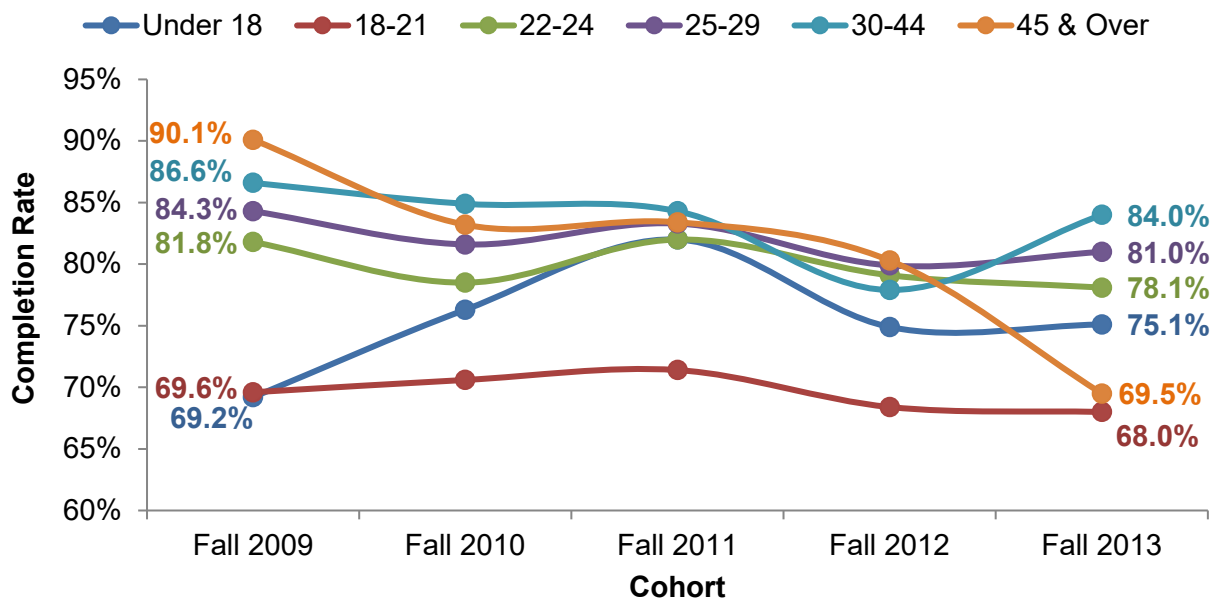
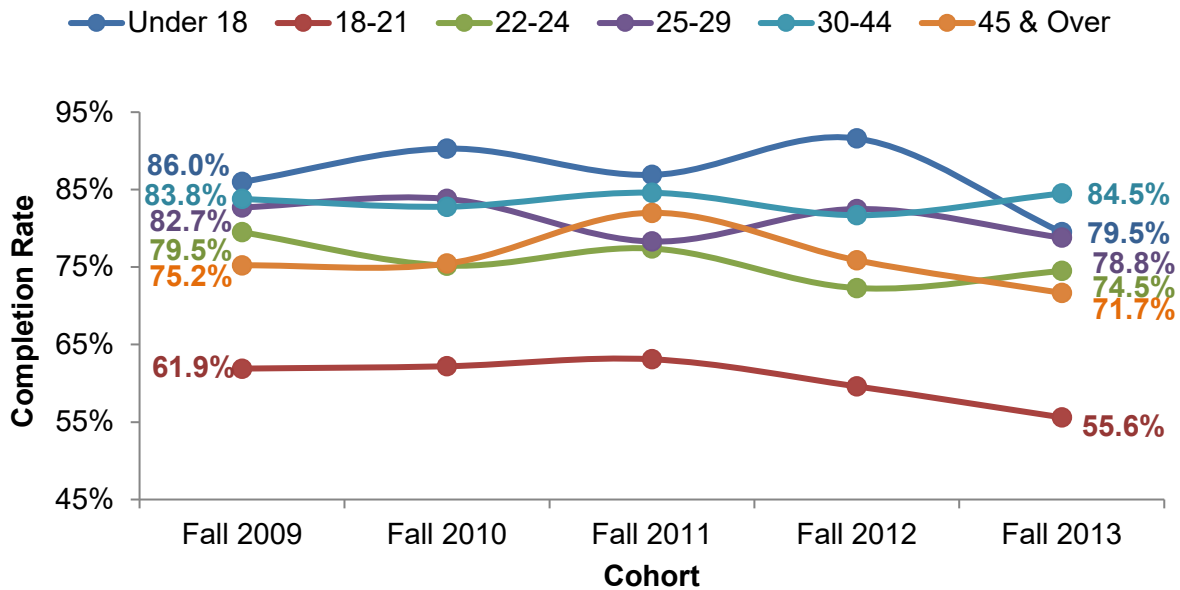


Figure 5 shows the course completion rates of part-time students by age. As with full-time students, students ages 18 to 21 had the lowest rates of successful course completion. In contrast to full-time students, however, part-time students under 18 generally had the highest course completion rates of any age group.

**Figure 5. Successful Course Completion Rates of Part-Time Students by Age: Fall 2009 through Fall 2013 Cohorts**



#### Section 4. Successful Course Completion Rates of First-Time to NOVA Students by Full-/Part-Time Status and Race/Ethnicity

Table 4 shows the successful course completion rates of full- and part-time students by race/ethnicity. Among both full- and part-time students, Black and Hispanic students tended to have lower rates of successful course completion compared to other racial/ethnic groups. Asian and Other students generally had the highest rates of successful course completion in each cohort.

**Table 4. Successful Course Completion Rates by Full-/Part-Time Status and Race/Ethnicity: Fall 2009 through Fall 2013 Cohorts**

Status	Race/Ethnicity	Fall 2009 Cohort			Fall 2010 Cohort			Fall 2011 Cohort			Fall 2012 Cohort			Fall 2013 Cohort		
		N	Successful		N	Successful		N	Successful		N	Successful		N	Successful	
			#	%		#	%		#	%		#	%		#	%
Full-Time	White	11,367	8,038	70.7	12,304	8,790	71.4	11,696	8,534	73.0	12,321	8,635	70.1	12,556	8,794	70.0
	Black	3,717	2,483	66.8	3,547	2,449	69.0	4,123	2,838	68.8	4,430	2,964	66.9	4,704	3,029	64.4
	Asian	4,304	3,433	79.8	4,342	3,417	78.7	4,500	3,604	80.1	4,534	3,520	77.6	4,850	3,691	76.1
	Hispanic	4,198	2,970	70.7	3,322	2,330	70.1	3,772	2,686	71.2	3,820	2,510	65.7	4,589	3,066	66.8
	Native American	103	70	68.0	60	36	60.0	73	54	74.0	36	17	47.2	52	34	65.4
	Other	1,846	1,356	73.5	891	690	77.4	360	263	73.1	388	262	67.5	405	314	77.5
Part-Time	White	4,859	3,572	73.5	5,733	4,194	73.2	5,276	3,811	72.2	6,172	4,364	70.7	5,280	3,520	66.7
	Black	2,010	1,324	65.9	1,906	1,275	66.9	1,811	1,255	69.3	2,167	1,413	65.2	2,123	1,296	61.0
	Asian	1,192	909	76.3	1,195	874	73.1	1,301	978	75.2	1,406	1,023	72.8	1,333	927	69.5
	Hispanic	1,609	1,063	66.1	1,413	978	69.2	1,480	996	67.3	1,537	1,018	66.2	1,621	940	58.0
	Native American	47	31	66.0	23	18	78.3	31	18	58.1	29	19	65.5	31	12	38.7
	Other	681	528	77.5	340	250	73.5	189	140	74.1	173	131	75.7	255	198	77.6

Figure 6 (next page) shows the successful course completion rates of full-time students by race/ethnicity. In each cohort except Fall 2013, Asian full-time students had the highest rates of successful course completion. Black students had the lowest rates of successful course completion in the Fall 2009, Fall 2011, and Fall 2013 cohorts; Native Americans had the lowest rates in the Fall 2010 and Fall 2012 cohorts.

**Figure 6. Successful Course Completion Rates of Full-Time Students by Race/Ethnicity: Fall 2009 through Fall 2013 Cohorts**

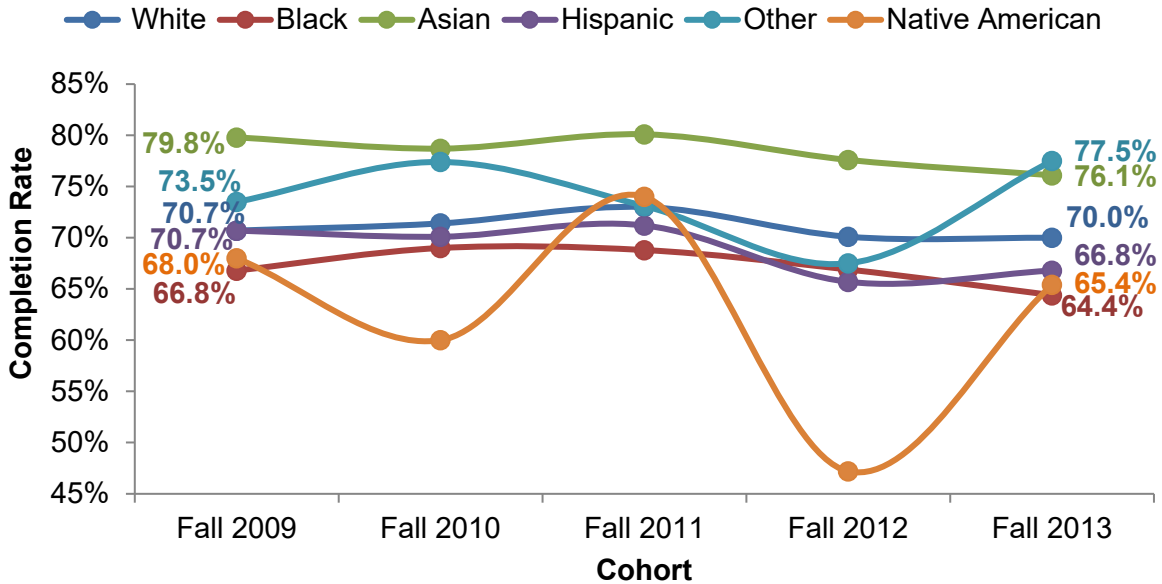
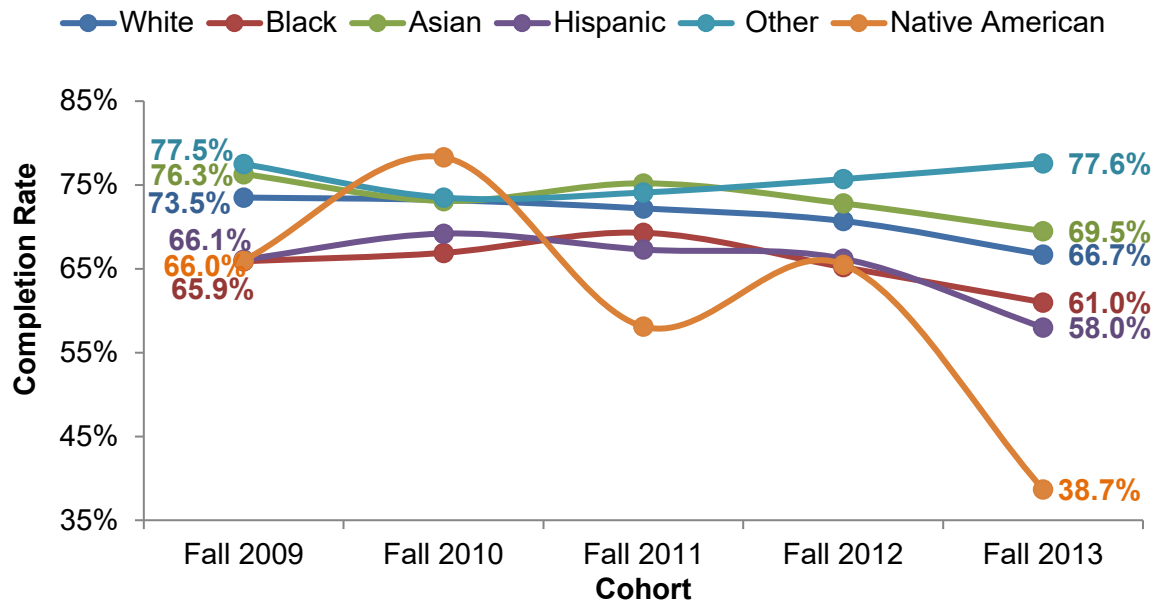


Figure 7 shows the successful course completion rates of part-time students by race/ethnicity. Among part-time students, Other students had the highest rates of successful course completion in three of the five cohorts, with completion rates that ranged from 74 to 78 percent. The lowest course completion rates were generally among Black and Native American students. Though rates fluctuated between cohorts, course completion rates were lower for nearly all racial/ethnic groups in the Fall 2013 cohort than in the Fall 2009 cohort.

**Figure 7. Course Completion Rates of Part-Time Students by Race/Ethnicity: Fall 2009 through Fall 2013 Cohorts**



**Section 5. Successful Course Completion Rates of First-Time to NOVA Students by Full-/Part-Time Status and Program Placement**

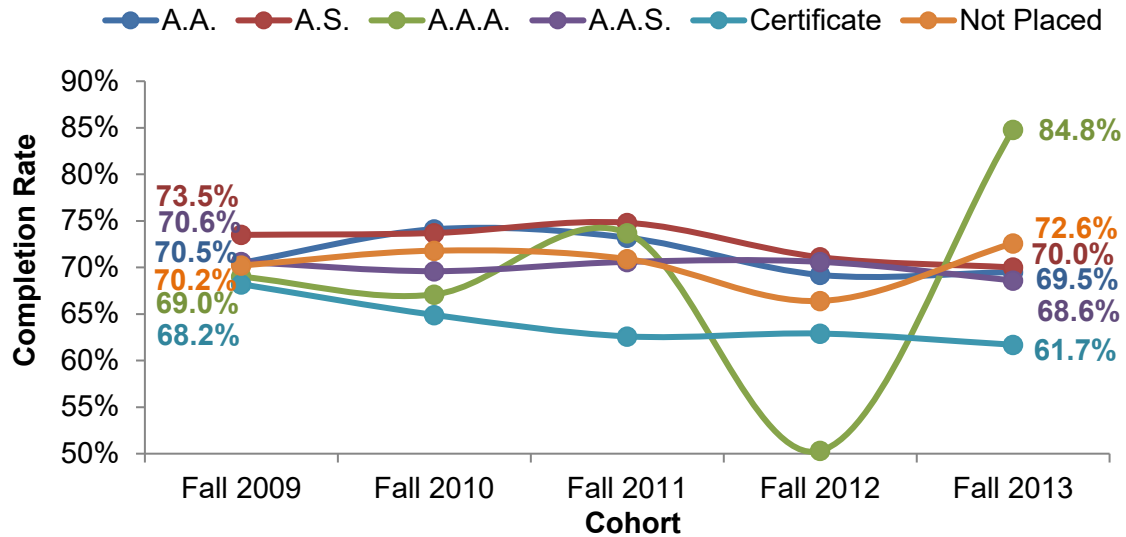
Table 5 shows successful course completion rates by full-/part-time status and program placement. Overall, full-time students placed in degree or certificate programs tended to have higher rates of successful course completion than part-time program-placed students. However, part-time Not Placed students had higher rates of successful course completion than full-time Not Placed students.

**Table 5. Successful Course Completion Rates by Full-/Part-Time Status and Program Placement: Fall 2009 through Fall 2013 Cohorts**

Status	Program Placement	Fall 2009 Cohort			Fall 2010 Cohort			Fall 2011 Cohort			Fall 2012 Cohort			Fall 2013 Cohort		
		N	Successful		N	Successful		N	Successful		N	Successful		N	Successful	
			#	%		#	%		#	%		#	%		#	%
Full-Time	A.A.	3,897	2,747	70.5	3,544	2,627	74.1	3,416	2,501	73.2	3,304	2,287	69.2	3,024	2,103	69.5
	A.S.	12,642	9,291	73.5	13,280	9,781	73.7	14,796	11,065	74.8	16,072	11,430	71.1	19,441	13,605	70.0
	A.A.A.	352	243	69.0	316	212	67.1	274	202	73.7	169	85	50.3	99	84	84.8
	A.A.S.	4,983	3,517	70.6	4,322	3,006	69.6	3,685	2,603	70.6	3,907	2,757	70.6	3,040	2,085	68.6
	Certificate	909	620	68.2	1,047	680	64.9	720	451	62.6	846	532	62.9	698	431	61.7
	Not Placed	2,752	1,932	70.2	1,957	1,406	71.8	1,633	1,157	70.9	1,231	817	66.4	854	620	72.6
Part-Time	A.A.	1,000	636	63.6	886	545	61.5	961	651	67.7	1,028	677	65.9	999	609	61.0
	A.S.	3,689	2,640	71.6	4,180	2,971	71.1	4,531	3,217	71.0	5,126	3,358	65.5	5,689	3,539	62.2
	A.A.A.	99	53	53.5	142	97	68.3	91	58	63.7	82	49	59.8	60	32	53.3
	A.A.S.	1,957	1,322	67.6	1,891	1,241	65.6	1,688	1,105	65.5	1,684	1,030	61.2	1,603	1,020	63.6
	Certificate	595	434	72.9	693	491	70.9	620	458	73.9	638	414	64.9	577	403	69.8
	Not Placed	3,058	2,342	76.6	2,818	2,244	79.6	2,197	1,709	77.8	2,926	2,440	83.4	1,715	1,290	75.2

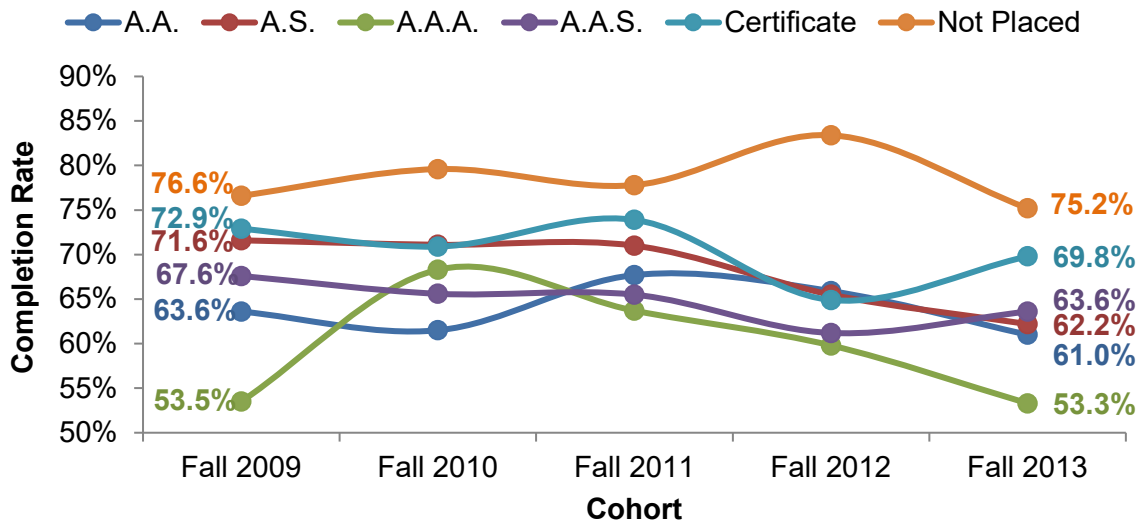
Figure 8 (next page) shows the successful course completion rates of full-time students by program placement. Rates of successful course completion for full-time students in the A.A., A.S., and A.A.S. programs varied little from cohort to cohort and generally stayed in the 70 to 75 percent range. Course completion rates varied considerably across each cohort of full-time students in the A.A.A. program, although this program contained the smallest number of full-time students.

**Figure 8. Successful Course Completion Rates of Full-Time Students by Program Placement: Fall 2009 through Fall 2013 Cohorts**



Finally, Figure 9 shows the successful course completion rates of part-time students by program placement. Part-time students who were not placed in a degree or certificate program had the highest rates of course completion in each cohort. As with full-time students, course completion rates of A.A.A. program students varied considerably across cohorts, though again, this program contains a relatively small number of students overall. Of note, for each program, the Fall 2013 cohort had a lower rate of course completion than the Fall 2009 cohort.

**Figure 9. Successful Course Completion Rates of Part-Time Students by Program Placement: Fall 2009 through Fall 2013 Cohorts**



## ***NOVA Mission and Strategic Goals: 2005 – 2015***

### **Mission**

With commitment to the values of access, opportunity, student success, and excellence, the mission of Northern Virginia Community College is to deliver world-class in-person and online post-secondary teaching, learning, and workforce development to ensure our region and the Commonwealth of Virginia have an educated population and globally competitive workforce.

### **Strategic Goals**

- I. **STUDENT SUCCESS** – Northern Virginia Community College will move into the top tier of community colleges with respect to the college readiness, developmental course completion, retention, graduation, transfer, and career placement of its students.
- II. **ACCESS** – Northern Virginia Community College will increase the number and diversity of students being served to mirror the population growth of the region.
- III. **TEACHING AND LEARNING** – Northern Virginia Community College will focus on student success by creating an environment of world-class teaching and learning.
- IV. **EXCELLENCE** – Northern Virginia Community College will develop ten focal points of excellence in its educational programs and services that will be benchmarked to the best in the nation and strategic to building the College's overall reputation for quality.
- V. **LEADERSHIP** – Northern Virginia Community College will serve as a catalyst and a leader in developing educational and economic opportunities for all Northern Virginians and in maintaining the quality of life and economic competitiveness of the region.
- VI. **PARTNERSHIPS** – Northern Virginia Community College will develop strategic partnerships to create gateways of opportunity and an integrated educational system for Northern Virginians who are pursuing the American Dream.
- VII. **RESOURCES** – Northern Virginia Community College will increase its annual funding by \$100 million and expand its physical facilities by more than one million square feet in new and renovated space. This includes the establishment of two additional campuses at epicenters of the region's population growth, as well as additional education and training facilities in or near established population centers.
- VIII. **EMERGENCY PREPAREDNESS AND CONTINUITY OF OPERATIONS** – Northern Virginia Community College will be recognized as a leader among institutions of higher education in Virginia for its development and testing of emergency response and continuity of operation plans.



# **NOVA**

---

**Northern Virginia  
Community College**

**703-323-3000 | [www.nvcc.edu](http://www.nvcc.edu)**